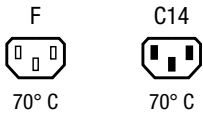
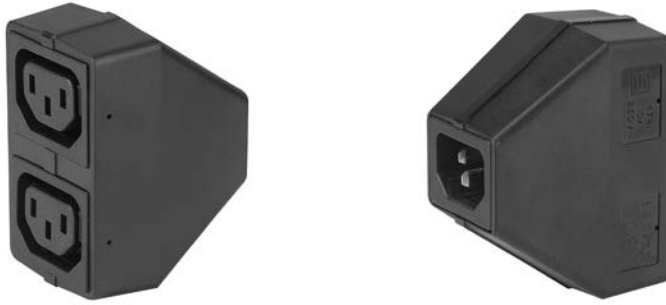


Distribution Unit with 1 IEC Appliance Inlet C14 and 2 Appliance Outlets F, Shuttered



### Description

- Stand alone module
- 1 Function:  
of 2 outlets, Pin temperature 70 °C, Protection class I, shuttered

### Weblinks

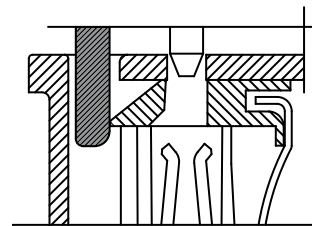
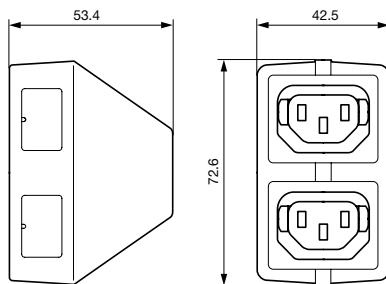
[pdf-datasheet](#), [html-datasheet](#), [General Product Information](#), [Approvals](#), [CE declaration of conformity](#), [RoHS](#), [CHINA-RoHS](#), [Mating Connectors](#), [e-Shop](#), [SCHURTER-Stock-Check](#), [Distributor-Stock-Check](#), [CAD-Drawings](#), [Accessories](#), [Mounting instruction](#), [Detailed request for product](#)

### Technical Data

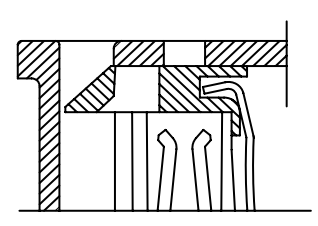
|                           |  |
|---------------------------|--|
| Ratings IEC               | 10 A / 250 VAC; 50 Hz  |
| Ratings UL/CSA            | 10 A / 250 VAC; 60 Hz  |
| Dielectric Strength       | > 2.5 kVAC between L-N<br>> 2.5 kVAC between L/N-PE<br>(3 sec/50 Hz) |
| Allowable Operation Temp. | -25 °C to 70 °C  |
| Protection Class          | Suitable for appliances with protection class I acc. to IEC 61140    |
| Material: Housing         | Thermoplastic, black, UL 94V-0                                       |

|                                    |  |
|------------------------------------|--|
| Appliance Inlet / Appliance Outlet | C14 acc. to IEC 60320,<br>/ F acc. to IEC 60320,<br>UL 498 CSA C22.2 no. 42 (for cold conditions) pin-temperature 70 °C,<br>10 A, Protection Class I |
|------------------------------------|--|

### Dimensions



Shutter operation:  
shutters opened by plug insertion



Shutter operation:  
shutters closed when plug is removed

### Variants

| Type | Order Number |
|------|--------------|
| 4741 | 4741.0000    |

Most Popular.

Availability for all products can be searched real-time: <http://www.schurter.com/en/Stock-Check/Stock-Check-SCHURTER>

Packaging unit 50 Pcs

## Mating Inlets/Plugs

## Category / Description

## Plug Overview complete



|   |      |
|---|------|
| IEC Plug E, Cord Connector (Rewireable), Straight, max. cable Diameter 8.5 mm | 4732 |
| IEC Plug E, Cord Connector (Rewireable), Angled, max. Cable Diameter 8.5 mm   | 4733 |
| IEC Plug E, Cord Connector (Rewireable), Straight, max. Cable Diameter 10 mm  | 4735 |
| IEC Plug E, Cord Connector (Rewireable), Angled, max. Cable Diameter 10 mm    | 4736 |
| IEC Plug E, Cord Connector (Rewireable), Straight                             | 9009 |
| <a href="#">Plug further types to 4741</a>                                    | ...  |