

IEC Appliance Inlet C14 with Filter, Fuseholder 2-pole, Line Switch 2-pole

Standard- or Medical-Filter



Aluminum



Nickel plated steel



### Description

- Panel Mount:  
Screw-on mounting from front side
- 4 Functions:  
Appliance Inlet Protection class I, Line Switch 2-pole, Fuseholder for fuse-links 5 x 20 mm 2-pole, Line filter in standard and medical version
- Quick connect terminals 6.3 x 0.8 mm

### Approvals

- VDE Certificate Number: 40004665
- UL File Number: E72928

### Characteristics

- Compact design with optimal shielding
- All single elements are already wired
- Plug removal necessary for fuse-link replacement  
If the power entry module is installed as normal, it is not possible to touch any live parts with the test-finger according to IEC60529  
Fuse drawer meets requirements of medical standard IEC/EN 60601-1  
The fuseholder is accessible from the equipment front
- With EMC-shield
- Suitable for use in equipment according to IEC/UL 60950  
Suitable for use in medical equipment according to IEC/UL 60601-1

### Other versions on request

- Medical version M80

### Weblinks

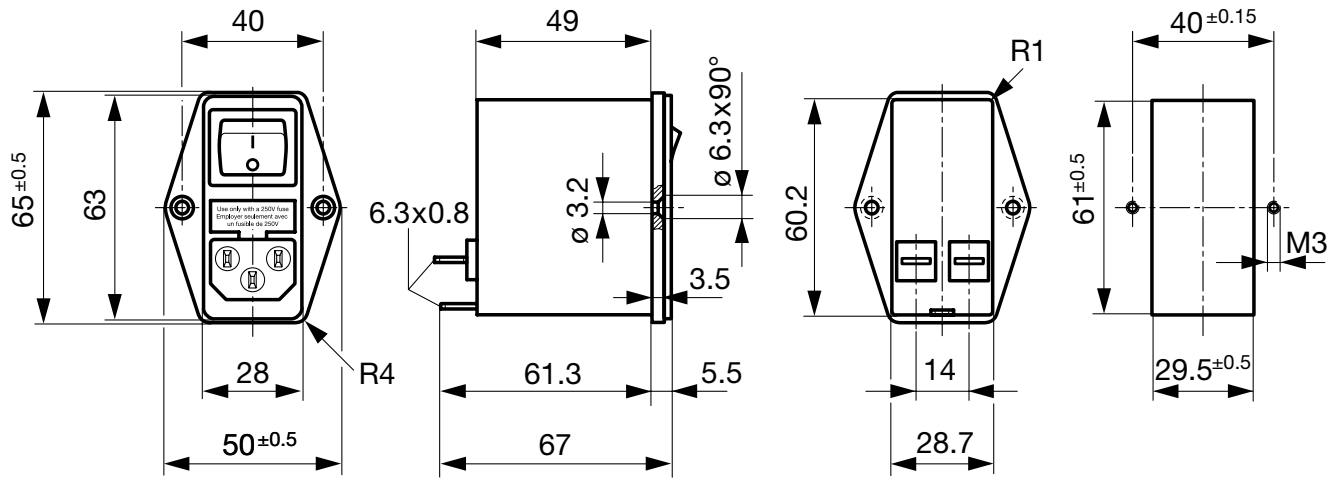
[pdf-datasheet](#), [html-datasheet](#), [General Product Information](#), [Approvals](#), [CE declaration of conformity](#), [RoHS](#), [CHINA-RoHS](#), [Mating Connectors](#), [e-Shop](#), [SCHURTER-Stock-Check](#), [Distributor-Stock-Check](#), [CAD-Drawings](#), [Accessories](#), [Detailed request for product](#)

### Technical Data

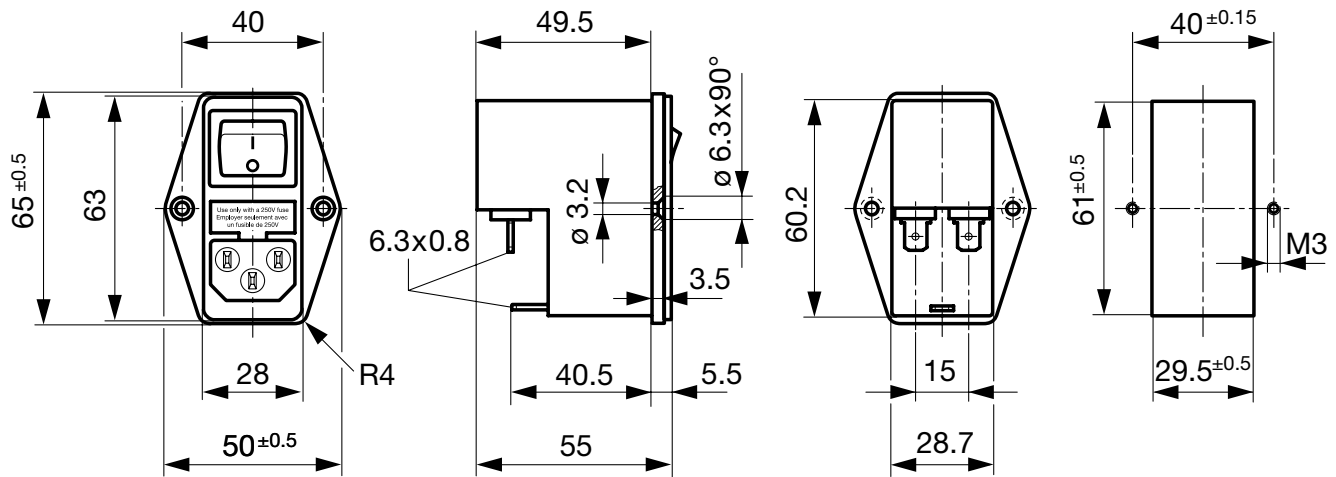
Ratings IEC	1 - 10 A @ Ta 40 °C / 250 VAC; 50 Hz	Appliance-Inlet/-Outlet	C14 acc. to IEC 60320, UL 498, CSA C22.2 no. 42 (for cold conditions) pin-temperature 70 °C, 10 A, Protection Class I
Ratings UL/CSA	1 - 10 A @ Ta 40 °C / 125 VAC; 60 Hz	Fuseholder	2-pole, Shocksafe category PC2 acc. to IEC 60127-6, for fuse-links 5 x 20 mm
Leakage Current	standard < 0.25 mA (250 V / 60 Hz) medical < 5 µA (250 V / 60 Hz)	Rated Power Acceptance @ Ta 23 °C	5 x 20: 1.6 W (2-pole)
Dielectric Strength	> 1.7 kVDC between L-N > 2.7 kVDC between L/N-PE Test voltage (2 sec)	Power Acceptance @ Ta > 23°C	Admissible power acceptance at higher ambient temperature see derating curves
Allowable Operation Temp.	-25 °C to 85 °C	Line Switch	2-pole, non-illuminated, acc. to IEC 61058-1 <a href="#">Technical Details</a>
Climatic Category	25/085/21 acc. to IEC 60068-1	Line Filter	Standard and Medical Version, IEC 60939, UL 1283, CSA C22.2 no. 8 <a href="#">Technical Details</a>
Degree of Protection	from front side IP 40 acc. to IEC 60529	MTBF	> 1'700'000 h acc. to MIL-HB-217 F
Protection Class	Suitable for appliances with protection class I acc. to IEC 61140		
Terminal	Quick connect terminals 6.3 x 0.8 mm		
Panel Thickness s	Screw: max 8 mm Mounting screw torque max 0.5 Nm		
Material: Housing	Thermoplastic, black, UL 94V-0		

Dimension

Case 45



Case 50

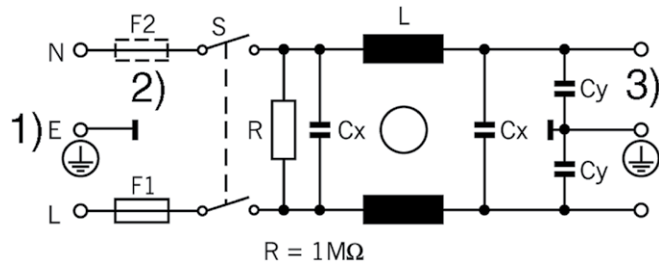


Technical Data of Filter-Components

Rated Current [A]	Filter-Type	Inductances L [mH]	Capacitance CX [nF]	Capacitance CY [nF]	R [MΩ]
1	Standard Version	2 x 10	68	2.2	1
2	Standard Version	2 x 4	68	2.2	1
4	Standard Version	2 x 1.5	68	2.2	1
6	Standard Version	2 x 0.8	68	2.2	1
10	Standard Version	2 x 0.3	68	2.2	1
1	Medical Version (M5)	2 x 10	68	-	1
2	Medical Version (M5)	2 x 4	68	-	1
4	Medical Version (M5)	2 x 1.5	68	-	1
6	Medical Version (M5)	2 x 0.8	68	-	1
10	Medical Version (M5)	2 x 0.3	68	-	1

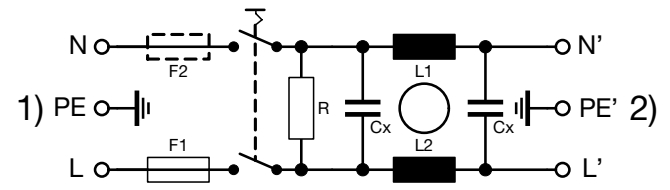
Diagrams

Standard version



- 1) Line
- 2) only FKI
- 3) Load

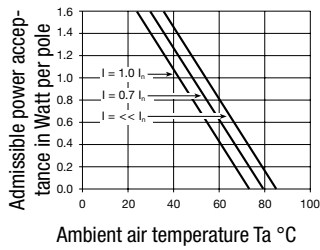
Medical version



- 1) Line
- 2) Load

Derating Curves

2-pole

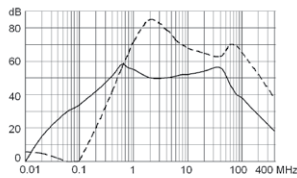


Attenuation Loss

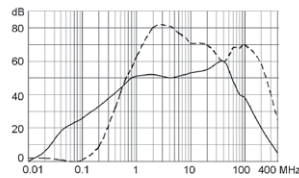
Standard version

--- differential mode    \_\_\_\_ common mode

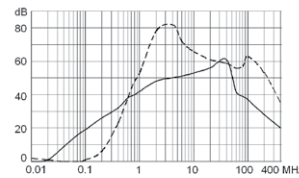
1 A



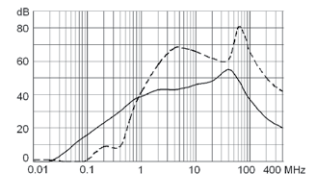
2 A



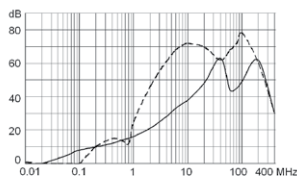
4 A



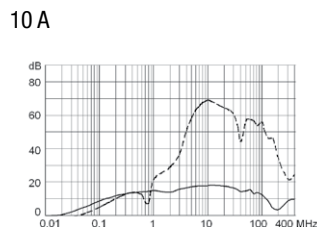
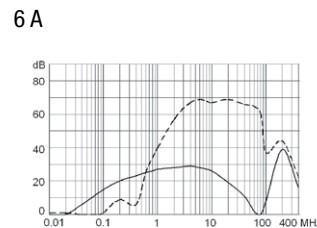
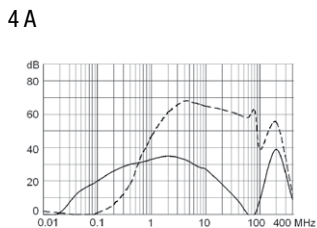
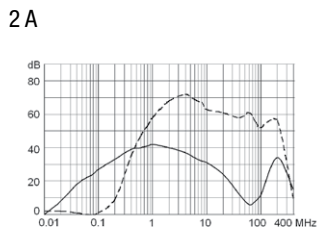
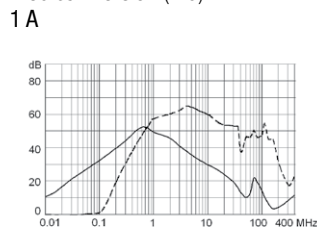
6 A



10 A



Medical version (M5)



Variants

Type	Rated Current [A]	Filter-Type	Fuseholder	Line Switch	Housing	Material: Housing	Comment	Order Number
FKI	1	Standard Version	2-pole	2-pole	45	Aluminum	-	4304.4061
FKI	2	Standard Version	2-pole	2-pole	45	Aluminum	-	4304.4062
FKI	4	Standard Version	2-pole	2-pole	45	Aluminum	-	4304.4063
FKI	6	Standard Version	2-pole	2-pole	45	Aluminum	-	4304.4064
FKI	10	Standard Version	2-pole	2-pole	45	Aluminum	-	4304.4065
FKI	1	Medical Version (M5)	2-pole	2-pole	45	Aluminum	-	4304.4091
FKI	2	Medical Version (M5)	2-pole	2-pole	45	Aluminum	-	4304.4092
FKI	4	Medical Version (M5)	2-pole	2-pole	45	Aluminum	-	4304.4093
FKI	6	Medical Version (M5)	2-pole	2-pole	45	Aluminum	-	4304.4094
FKI	10	Medical Version (M5)	2-pole	2-pole	45	Aluminum	-	4304.4095
FKI	1	Standard Version	2-pole	2-pole	50	Nickel plated steel	-	4304.4021
FKI	2	Standard Version	2-pole	2-pole	50	Nickel plated steel	-	4304.4022
FKI	4	Standard Version	2-pole	2-pole	50	Nickel plated steel	-	4304.4023
FKI	6	Standard Version	2-pole	2-pole	50	Nickel plated steel	-	4304.4024
FKI	10	Standard Version	2-pole	2-pole	50	Nickel plated steel	-	4304.4025
FKI	1	Medical Version (M5)	2-pole	2-pole	50	Nickel plated steel	-	4304.4066
FKI	2	Medical Version (M5)	2-pole	2-pole	50	Nickel plated steel	-	4304.4067
FKI	4	Medical Version (M5)	2-pole	2-pole	50	Nickel plated steel	-	4304.4068
FKI	6	Medical Version (M5)	2-pole	2-pole	50	Nickel plated steel	-	4304.4069
FKI	10	Medical Version (M5)	2-pole	2-pole	50	Nickel plated steel	-	4304.4070

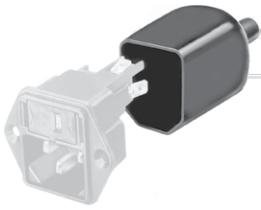
Most Popular.

Availability for all products can be searched real-time: <http://www.schurter.com/en/Stock-Check/Stock-Check-SCHURTER>

Packaging unit 10 Pcs

Accessories

Description



Assorted Covers  
Rear Cover

Mating Outlets/Connectors

Category / Description

[Appliance Outlet Overview complete](#)



IEC Appliance Outlet F, Screw-on Mounting, Front Side, Solder Terminal	4787
IEC Appliance Outlet F, Snap-in Mounting, Front Side, Solder or Quick-connect Terminal	4788
IEC Appliance Outlet F or H, Screw-on Mounting, Front Side, Solder, PCB or Quick-connect Terminal	5091

[Appliance Outlet further types to FKI](#)

[Connector Overview complete](#)



IEC Connector C15A, Rewireable, Straight	0102
IEC Connector C15A, Rewireable, Straight	0102-G
IEC Connector C15A, Rewireable, Angled	0112
IEC Connector C13, Rewireable, Angled	4012
IEC Connector C13, Rewireable, Straight	4022

[Connector further types to FKI](#) ...