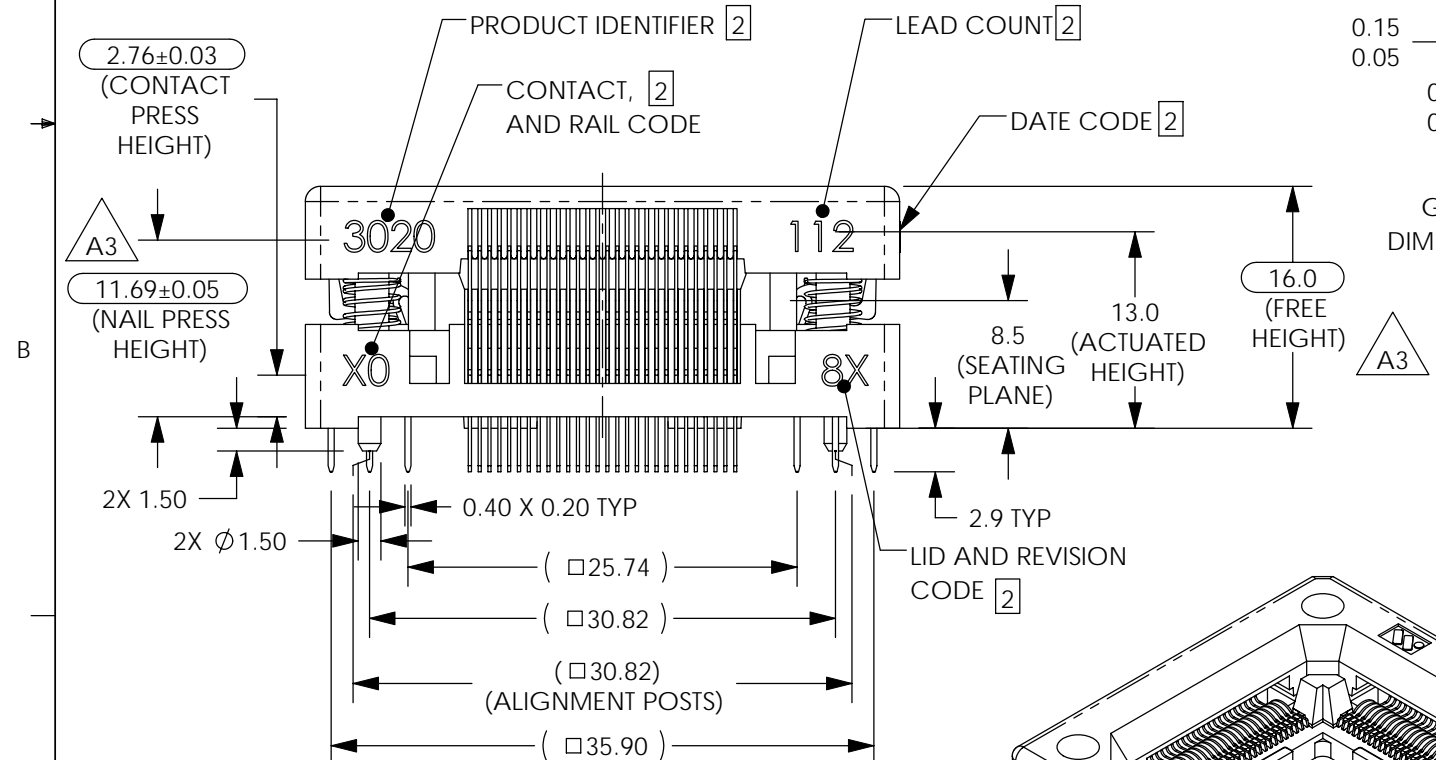
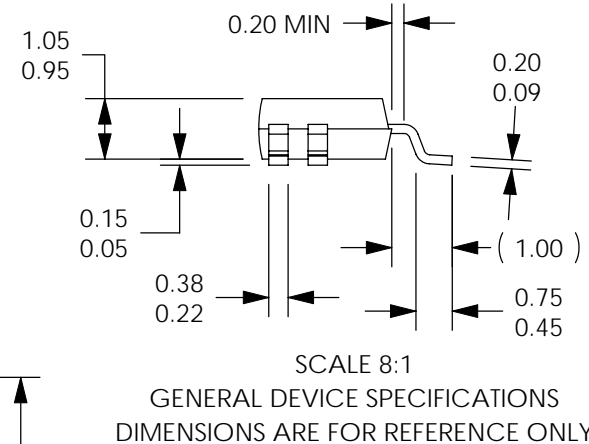
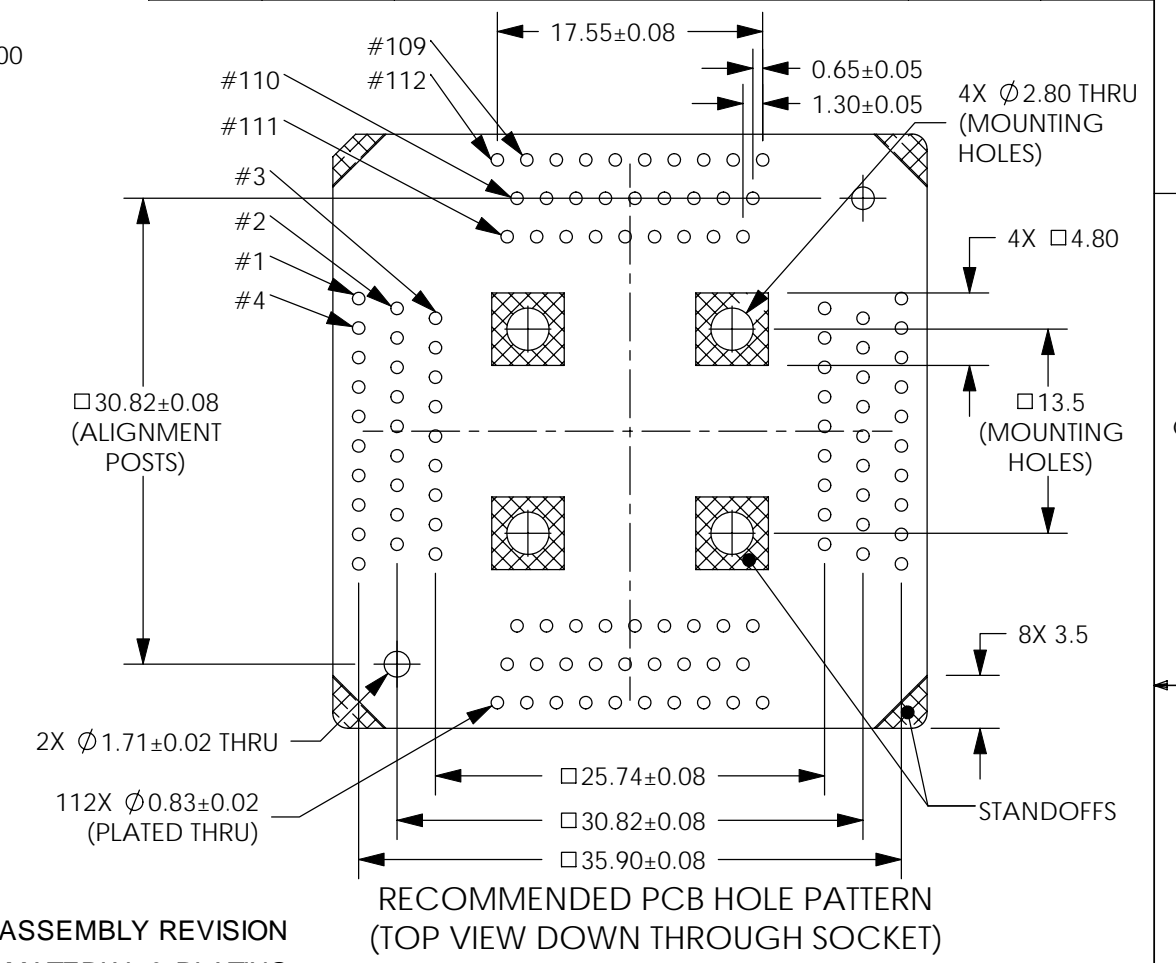


REVISIONS				
REV	ECN	DESCRIPTION	DATE	BY
A1	JT013001	REMOVED 3 & 7 FROM CONTACT OPTIONS; UPDATED DRAWING TITLE BLOCK; REMOVED NAIL PRESS HEIGHT DIM.; UPDATED MARKING TEXT LOCATION; UPDATED ITEM 5 FROM 005-027-00 TO 2800632; ADDED NOTES 3 AND DIM. 8X 3.5;	8/13/09	CC
A2	JT013287	ADDED 7 BACK TO CONTACT OPTIONS; UPDATED DEVICE NOTES;	11/26/2009	CC
A3	10-0200	ADDED 11.69±0.05 (NAIL PRESS HEIGHT) 16.0 WAS 16.00	5/5/2010	DLC



**3020-112 - X - 08 X**

SOCKET ASSEMBLY REVISION

CONTACT MATERIAL & PLATING

0 = BeCu w/ Au (Overall) (SPECIAL ORDER)

6 = BeCu w/ Au-Au FLASH

7 = Pfin w/ Au-Au FLASH (SPECIAL ORDER)

ITEM NO.	QTY.	PART NUMBER	DESCRIPTION
5	4	2800632	SPRING, COMP., .150IN. O.D., .200IN. LEN.
4	4	006-027-00	CORNER NAIL
3	112	002-086-XX	CONTACT, REDUCED ACTUATION FORCE
2	1	001-477-20	SOCKET LID
1	1	001-476-20	SOCKET, BASE (112LD, 0.65mm C/C)

3. THIS PRODUCT IS ROHS COMPLIANT.

[2] MARKING: 2.0 HIGH, COLOR - WHITE, LOCATE AS SHOWN.

1. MATERIAL AND FINISH:

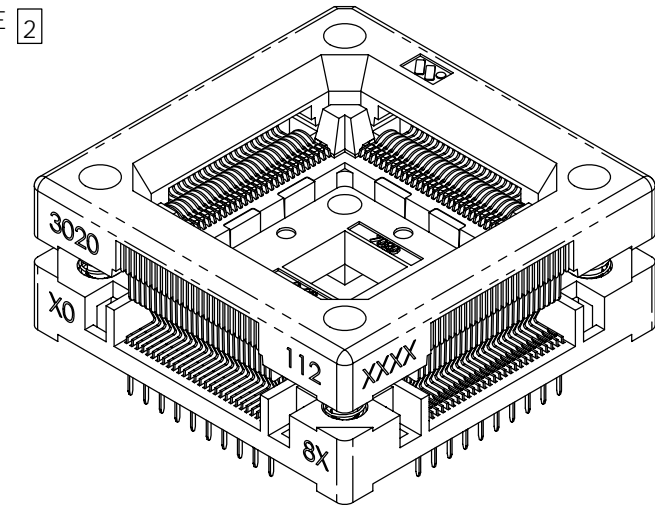
SOCKET LID - POLYETHERIMIDE

SOCKET BASE - POLYETHERIMIDE

CONTACTS - SEE CHART

NAILS AND SPRINGS - STAINLESS STEEL, PASSIVATED.

NOTES, UNLESS OTHERWISE SPECIFIED:



<b>LEGEND</b>		INTERPRET DRAWING IN ACCORDANCE WITH ASME Y14.5M-1994	MATERIAL SEE NOTES			
	CRITICAL		FINISH SEE NOTES			
3	TOTAL NO. OF USED	TOLERANCES	REFERENCE	DRAWN PH	DATE 4/1/08	TITLE QFP SOCKET ASSEMBLY (20MM, 112LD, 0.65MM C/C)
PROJECTION			PROJECT / SERIES 3020	CHECKED JC	DATE 4/1/08	
SIZE		CONFIDENTIAL/PROPRIETARY THIS DOCUMENT CONTAINS PROPRIETARY INFORMATION OF WELLS-CTI. NOT TO BE USED, COPIED OR DISCLOSED WITHOUT PERMISSION. ALL RIGHTS RESERVED.		ENGINEER PH	DATE 4/1/08	REV. A3
<b>B</b>			QUALITY	DATE	SCALE 2:1	UNITS:mm [in]
		MFG. ENGR.	DATE	DO NOT SCALE	SHEET 1 OF 1	