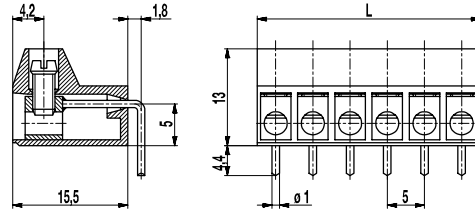


# 970-LH(-DS)

PCB connector

Screw connection, right angle solder pin, pottable



## GENERAL INFORMATION

Pitch	5 mm
No. of poles	2 - 12

## TECHNICAL DATA

Clamping Range	<i>solid / stranded / AWG</i>		
<i>without wire protector</i>	1 - 6 mm <sup>2</sup> / 1 - 2,5 mm <sup>2</sup> / 16 - 12 AWG		
<i>with wire protector</i>	0,75 - 4 mm <sup>2</sup> / 0,75 - 2,5 mm <sup>2</sup> / 18 - 12 AWG		
Rated Cross Section	2,5 mm <sup>2</sup>		
Wire Stripping Length	8 mm ± 0,5 mm		
Overvoltage Category	III	III	II
Pollution Severity Level	3	2	2
Rated Voltage	250 V	320 V	630 V
Rated Impulse Voltage	4 kV	4 kV	4 kV
Rated Insulation Voltage	250 V acc. to EN 60998-1		
Rated Current	24 A		
Hole in PCB	ø 1,3 mm		
Torque	0,5 Nm		

## APPROVALS

	Current [A]	Voltage [V]	Group	AWG	[Nm]
	20	300	B	22-12 [1]	0,51
	10	300	D	22-12 [1]	0,51
	20	300	B	26 - 12	0,51
	10	300	D, E	26 - 12	0,51
	Current [A]	Voltage [V]	mm <sup>2</sup>		
	24	250	2,5 [2]		

## CONFIGURATIONS

Poles	Part number	Article number	Part number	Article number	Length (L)	Packaging	PU
2	970-LH/02	10.873.402	970-LH-DS/02	20.873.402	10,00 mm	Box	100
3	970-LH/03	10.873.403	970-LH-DS/03	20.873.403	15,00 mm	Box	100
4	970-LH/04	10.873.404	970-LH-DS/04	20.873.404	20,00 mm	Box	100
5	970-LH/05	10.873.405	970-LH-DS/05	20.873.405	25,00 mm	Box	500
6	970-LH/06	10.873.406	970-LH-DS/06	20.873.406	30,00 mm	Box	100

## MATERIAL

Moulding	PA, grey, V-0
Comparative Tracking Index	CTI ≥ 600
Insulating Group	I
Temperature Range	-40°C up to 100°C
Terminal body	Tin plated brass
Screw	M3; zinc plated steel, blue passivated
Solder pin	ø 1 mm; tin plated copper
Wire protector	Tin plated tin bronze

## OPTIONS / ACCESSORIES

- Consecutive numbering
- Special marking according to drawing
- Self-adhesive marking strip BST-5,00
- Other solder pin lengths and bending positions on request
- Version with extended wire entrance
- Version with larger clamping range
- Double wire protector as bridge

[1] Min No. 26 AWG for factory-wiring only

