

Screw Connectors for Printed Circuit Boards

990-DS | 5.00 mm (0.197 in) Spacing - 2-28 poles

PICTURES



990-DS

TECHNICAL INFORMATION

Description

Wire entrance parallel to PC Board

Elevator-style clamping mechanism



Technical Data**Center to Center Spacing:** 5.000 mm (0.197 in)**Nominal Cross Section:** 1.5 mm² (2325 mils²)**Wire Stripping Length:** 6.000 mm (0.236 in)**Recommended Hole Diameter in PC Board:** 1.300 mm (0.051 in)**Bill of Materials****Molding :** Polyamide, UL 94, V-2**Color :** Black**Temperature limits :****Short Time :** 140°C (284°F)**Continuous :** 105°C (221°F)**Low Limit :** -40°C (-40°F)**Comparative Tracking Index :** CTI ? 600 V**Oxygen Index Rating :** 25 %**Terminal Body:** Tin plated copper alloy

: Stainless steel strip

Screw: Slotted head, zinc plated blue passivated, steel substrate M3**Solder Pin:** Tin plated copper alloy 1.0 mm (0.04 in.)

APPROVAL INFORMATION

UL File No. E69841 | CSA File No. LR24322

Type	Current (A)	Voltage (V)	Application Group	AWG	Screw Tightening Torque
 990-DS 5.0 mm	15	300	B, C	22-14	4.5 lbfin
 990-DS 5.0 mm	10	300	D, E	22-14	0.51 lbfin
	15	300	B	22-14	0.51 lbfin

Alternative Approval Information

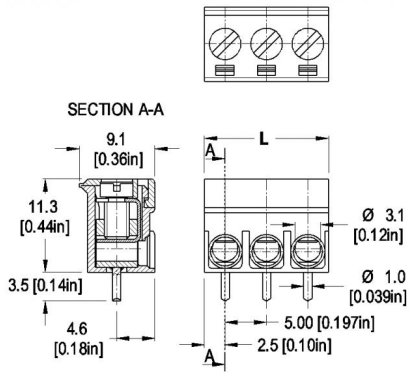
Type	Current (A)	Voltage (V)	Application Group	AWG	Screw Tightening Torque
990-DS	10	300	D, E	22-14	0.51 lbfin
10.0 mm	15	300	B	22-14	0.51 lbfin

International Approval Information



Rated Impulse Withstand Voltage : 2500 V

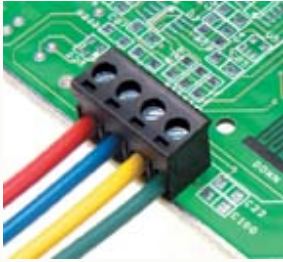
TECHNICAL DRAWING



Description :

Length of Connector (L)

$L = \text{No. of Poles} \times \text{Center to Center Spacing}$

SECTION A - SERIES 99**Terminal Blocks for Printed Circuit Boards**

Series 99 uses an elevator-style clamping mechanism this design forces a positive retraction of the wire protector to allow easy removal of the wire. Wiring can be removed and re-installed as often as needed. The connection is highly vibration resistant.

They are available in two versions - the standard 990 and the raised base 990-FU with a tilted base to provide a 20-degree wire entry for easier wiring in restricted spaces.

These blocks can be installed end-to-end while maintaining their center-to-center spacing and thus providing the designer with the needed configuration.

Each product has a "How To Order" area as well as a complete listing of UL and CSA approval specifications, available options and accessories.