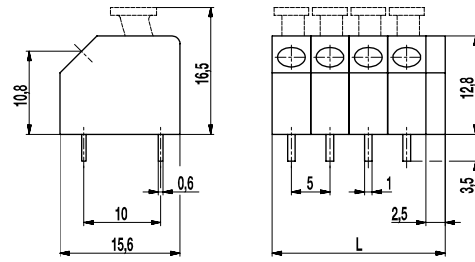
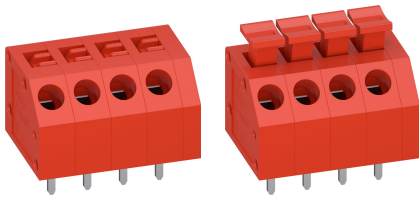


# 874(-DR)

PCB connector

Push-In connection diagonal 45° to PCB



## GENERAL INFORMATION

Pitch	5 mm
No. of poles	1 - 12

## TECHNICAL DATA

Clamping Range	solid / stranded / AWG		
	0,14 - 1,5 mm <sup>2</sup> / - / 26 - 16 AWG [1]		
Rated Cross Section	1,5 mm <sup>2</sup>		
Wire Stripping Length	10 mm ± 0,5 mm		
Overvoltage Category	III	III	II
Pollution Severity Level	3	2	2
Rated Voltage	250 V	320 V	630 V
Rated Impulse Voltage	4 kV	4 kV	4 kV
Rated Insulation Voltage	250 V acc. to EN 60998-1		
Rated Current	10 A		
Hole in PCB	ø 1,3 mm		
Other specifications	[1] solid wire		

## APPROVALS

	Current [A]	Voltage [V]	Group	AWG	[Nm]
	10	300	B	22 - 16 [1]	
	10	300	B, D, E	22 - 16	

[2] solid wire

## MATERIAL

Moulding	PA, red, V-0
Comparative Tracking Index	CTI ≥ 600
Insulating Group	I
Temperature Range	-40°C up to 100°C
Terminal body	Tin plated brass
Solder pin	0,6 x 1,0 mm; tin plated brass
Spring	Stainless strip steel

## OPTIONS / ACCESSORIES

- Consecutive numbering
- Special marking according to drawing
- Self-adhesive marking strip BST-5,00
- Other Pitch

## CONFIGURATIONS

Poles	Item	Article number	Item	Article number	Length (L)	Packaging	PU
1	874/01	11.812.001	874-DR/01	41.812.001	7,50 mm	Box	250
2	874/02	12.812.001	874-DR/02	42.812.001	12,50 mm	Box	200
3	874/03	13.812.001	874-DR/03	43.812.001	17,50 mm	Box	100
4	874/04	14.812.001	874-DR/04	44.812.001	22,50 mm	Box	100
5	874/05	15.812.001	874-DR/05	45.812.001	27,50 mm	Box	100
6	874/06	16.812.001	874-DR/06	46.812.001	32,50 mm	Box	50
7	874/07	17.812.001	874-DR/07	47.812.001	37,50 mm	Box	50
8	874/08	18.812.001	874-DR/08	48.812.001	42,50 mm	Box	50
9	874/09	19.812.001	874-DR/09	49.812.001	47,50 mm	Box	50
10	874/10	20.812.001	874-DR/10	50.812.001	52,50 mm	Box	50
12	874/12	22.812.001	874-DR/12	52.812.001	62,50 mm	Box	50

further number of poles on request

