

1. Description:

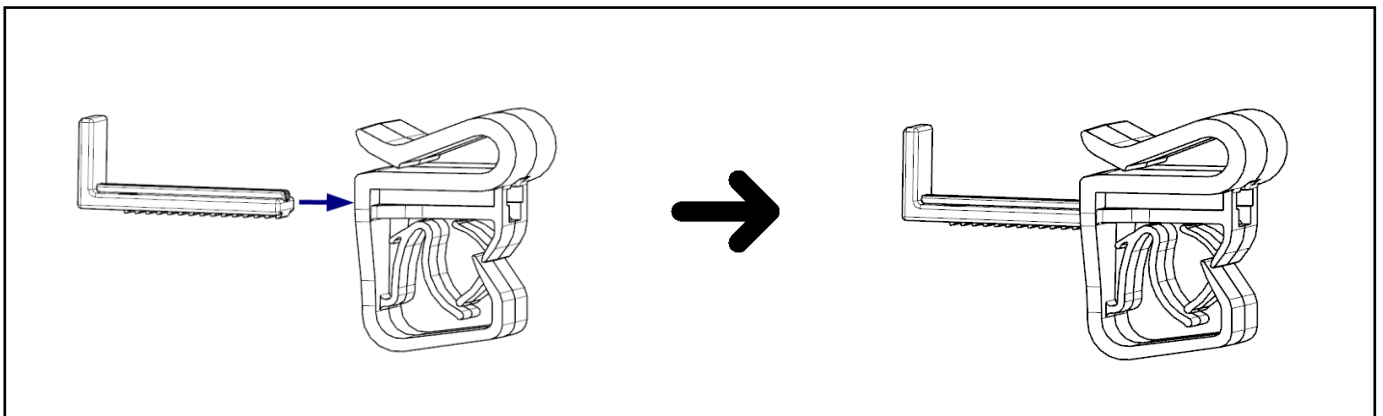
This universal edge clip provide 1 to 2 PV(Photovoltaic) cables routing/management for solar farm or general cabling applications.

2. Notice:

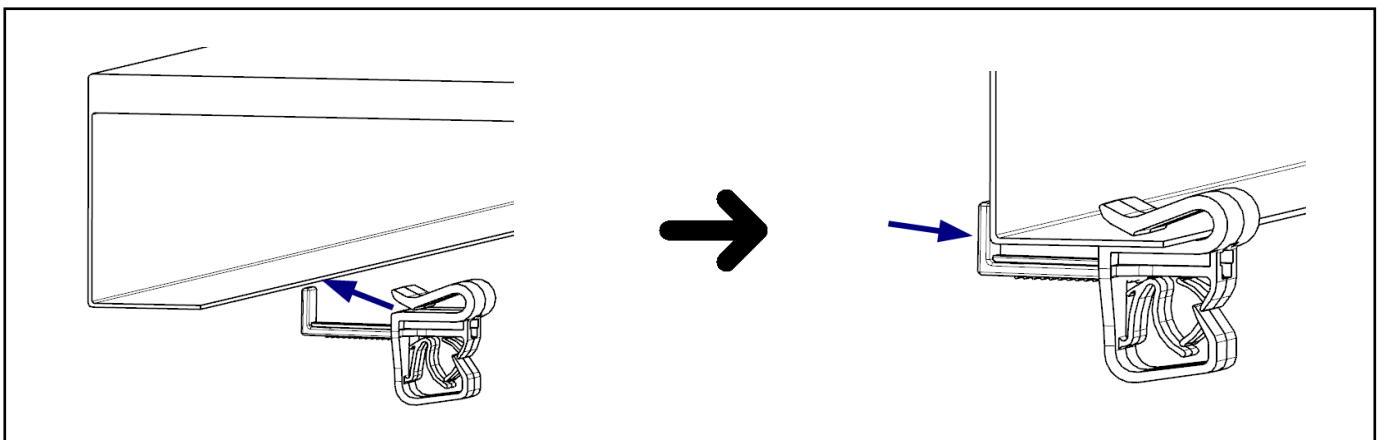
Latch releasing will have a chance to damage the components, please be careful. Don't reuse when it's damaged.

3. Installation Method I:

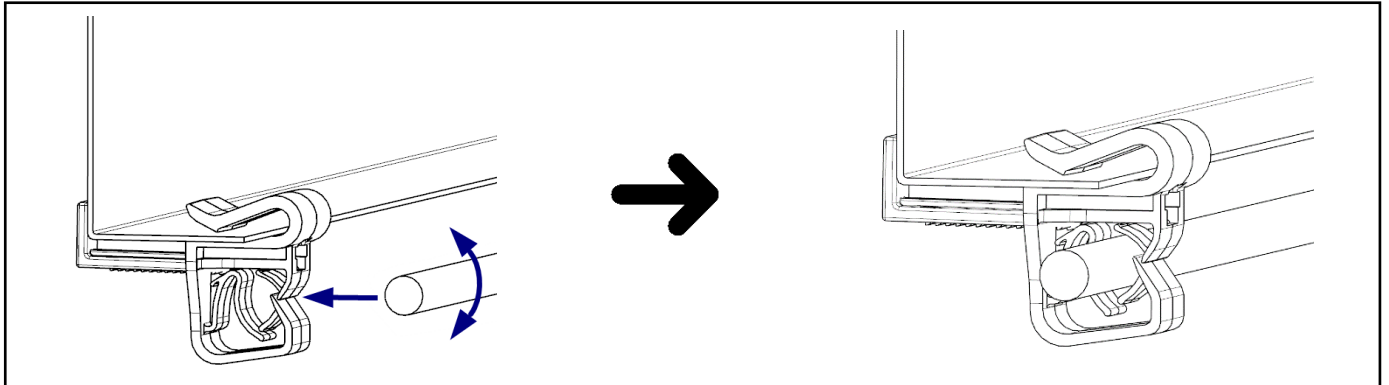
3.1 Pre-assemble the main clip and the latch with only 1 or 2 teeth by hearing 1 or 2 "clicking" sounds.



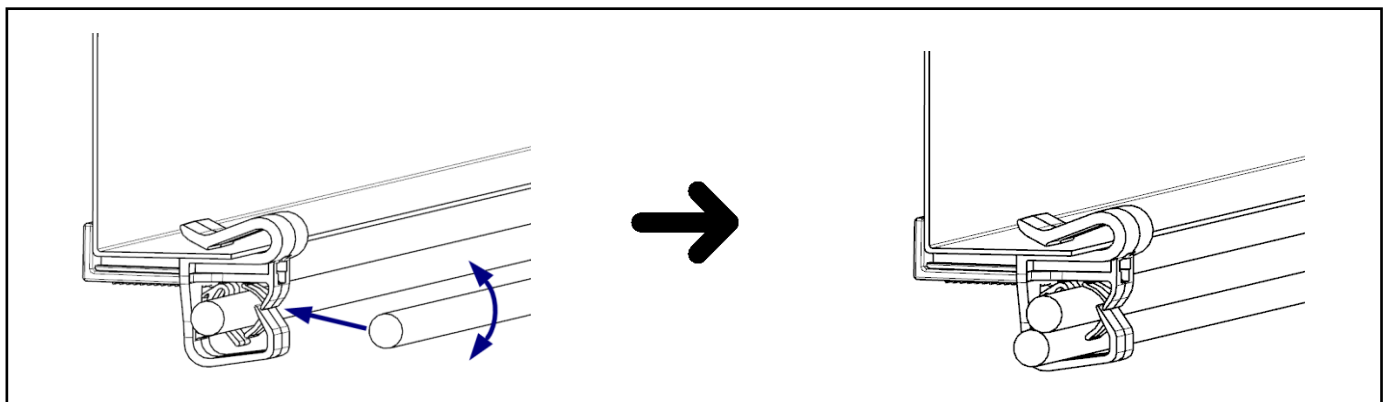
3.2 Press the pre-assembly toward the panel edge, and tighten the latch.



3.3 Press the first cable in and it will be clamped. Rotate the cable up and down a little bit will make it easier to press into the clip.

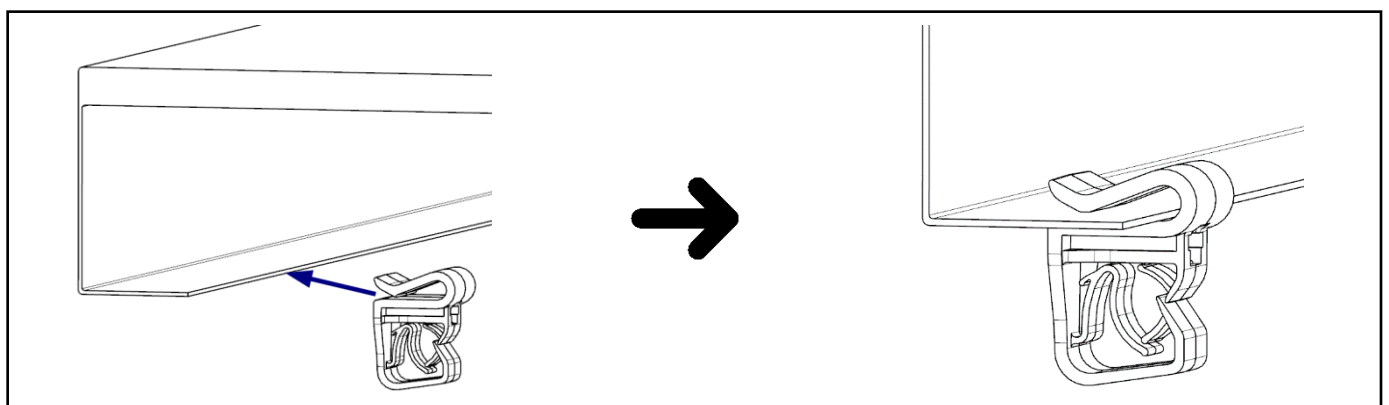


3.4 Press the second cable in if need, the first cable will be driven to the down position. Rotate the cable up and down a little bit will make it easier to press into the clip.



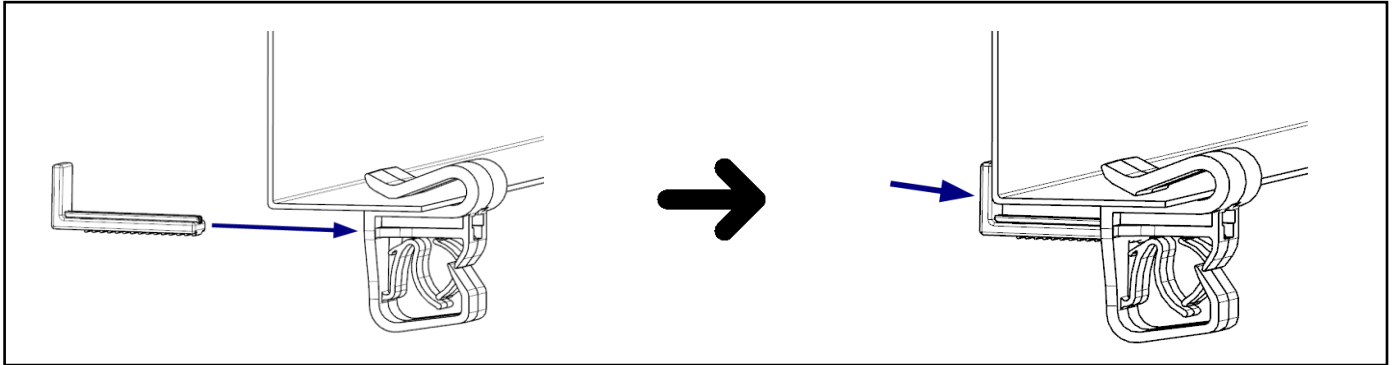
4. Installation Method II (recommended):

4.1 Press the edge clip toward the panel opening edge.



For Technical Support: www.panduit.com/resources/install_maintain.asp

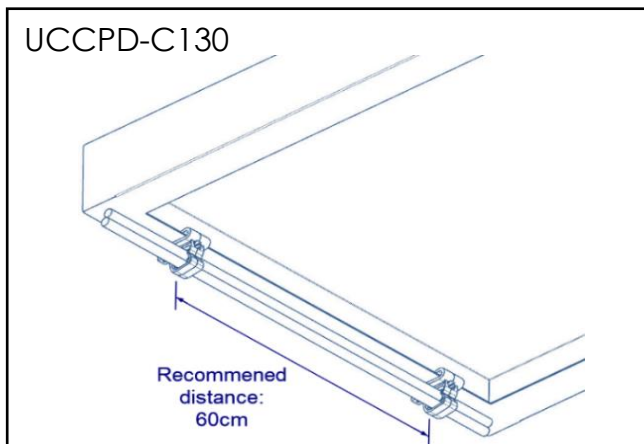
4.2 Insert the latch from the **back side** and secure the main clip to the panel.



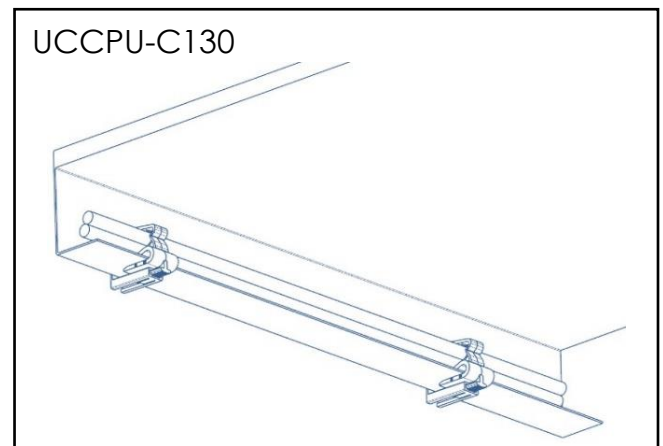
4.3 Clamp the cables refer to 3.3 and 3.4.

5. Work In Cabling System:

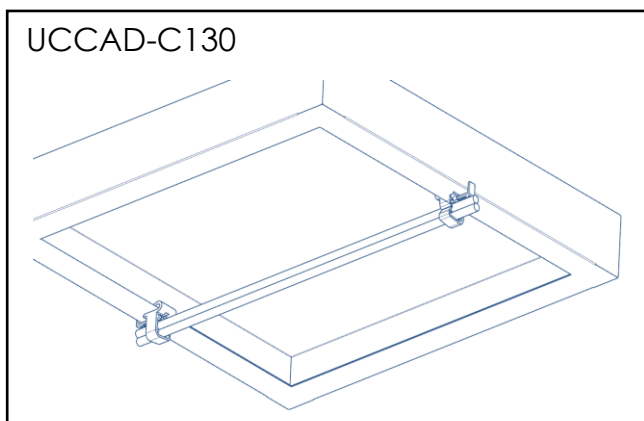
5.1 Cable fixed under the panel;



5.2 Cable fixed inside the panel;



5.3 Cable crossing fixed under the panel;



For Technical Support: www.panduit.com/resources/install_maintain.asp