

TOOLS AND ACCESSORIES

A wide range of accessories is available for the professional use of PTR HARTMANN test probes.

These include receptacle insertion tools for the ICT test probe range and test probes for use in test modules for cable tests. In addition, we offer screwing tools for our series of test probes with thread, also available as torque screwdrivers. A spring force measuring device, especially suitable for use with the push-back probes needed for the cable test, completes this range. This device makes it possible to carry out the necessary monitoring of contact pressures and their constancy.



Insertion and Extraction Tools

for Test Probes



TEST PROBE TYPE	SMALLEST SPACING mm / mil	TIP STYLE DIAMETER (mm)	INSERTION TOOL	EXTRACTION TOOL
1008/E	1.27 / 50	< 0.5	WFE 1200/1008E	-
1010	1.91 / 75	0.9 ... 1.5*	WFEA 1015	WFEA 1015
1012/E	1.91 / 75	< 0.9	WFEA 1015	Flat-Nose-Pliers
1012/E	1.91 / 75	0.9 ... 2.0*	WFEA 1015	WFEA 1015
1015	2.54 / 100	< 0.9	WFEA 1015	Flat-Nose-Pliers
1015	2.54 / 100	0.9 ... 2.0*	WFEA 1015	WFEA 1015
1021, 2021	2.54 / 100	< 1.2	WFEA 1021	Flat-Nose-Pliers
1021, 2021	2.54 / 100	1.2 ... 2.0*	WFEA 1021	WFEA 1021
1025/E	2.54 / 100	< 1.1	WFEA 1025/E	Flat-Nose-Pliers
1025/E	2.54 / 100	1.1 ... 2.3*	WFEA 1025/E	WFEA 1025/E
1028, 2028	2.54 / 100	< 1.5	WFEA 1028	Flat-Nose-Pliers
1028, 2028	2.54 / 100	1.5 ... 2.0*	WFEA 1028	WFEA 1028
1029, 2029	2.54 / 100	< 1.5	WFEA 1028	Flat-Nose-Pliers
1029, 2029	2.54 / 100	1.5 ... 2.0*	WFEA 1028	WFEA 1028
1030	2.54 / 100	< 1.5	WFEA 1028	Flat-Nose-Pliers
1030	2.54 / 100	1.5 ... 2.0*	WFEA 1028	WFEA 1028
1041	4.00 / 160	< 2.0	WFEA 1050	Flat-Nose-Pliers
1041	4.00 / 160	2.0 ... 3.0*	WFEA 1050	WFEA 1050
1042	4.00 / 160	< 2.0	WFEA 1050	Flat-Nose-Pliers
1042	4.00 / 160	2.0 ... 3.0*	WFEA 1050	WFEA 1050
1050	4.00 / 160	< 2.0	WFEA 1050	Flat-Nose-Pliers
1050	4.00 / 160	2.0 ... 3.0*	WFEA 1050	WFEA 1050
1060	4.00 / 160	< 2.0	WFEA 1050	Flat-Nose-Pliers
1060	4.00 / 160	2.0 ... 3.0*	WFEA 1050	WFEA 1050
2053	2.54 / 100	< 1.5	WFEA 1028	Flat-Nose-Pliers
2053	2.54 / 100	1.5 ... 2.0*	WFEA 1028	WFEA 1028
3010/..	4.00 / 160	< 2.0	WFEA 1050	Flat-Nose-Pliers
3010/..	4.00 / 160	2.0 ... 3.0*	WFEA 1050	WFEA 1050
3020/2	2.54 / 100	< 1.2	WFEA 1021	Flat-Nose-Pliers
3020/2	2.54 / 100	1.2 ... 2.0*	WFEA 1021	WFEA 1021
3026/2W	2.54 / 100	< 1.2	WFEA 1021	Flat-Nose-Pliers
3026/2W	2.54 / 100	1.2 ... 2.0*	WFEA 1021	WFEA 1021
3030	2.54 / 100	< 1.0	WFEA 3030	Flat-Nose-Pliers
3030	2.54 / 100	1.0 ... 2.3*	WFEA 3030	WFEA 3030

* When to use bigger headdiameters please order for special tools!
When ordering please mention the test probe type!

RECEPTACLE	SLEEVE INSERTION TOOL	
	COMPLETE	INSERTION
H 1007	WHE 1200/07	WHE 1200/007
H 1008, H1008/E	WHE 1200/08	WHE 1200/008
H 1010	WHE 1200/12	WHE 1200/012
H 1012	WHE 1200/12	WHE 1200/012
H 1015, H 1015/G..	WHE 1200/15	WHE 1200/015
H 1021	WHE 1200/21	WHE 1200/021
H 1021/GV..	WHE 1200/21-V	WHE 1200/021-V
H 1025	WHE 1200/15	WHE 1200/015
H 1030	WHE 1200/30	WHE 1200/030
H 1050	WHE 1200/50	WHE 1200/050
H 1053/GRV, H1053/GVRV	WHE 1200/53-V	WHE 1200/053-V
H 1070	WHE 1200/75	WHE 1200/075
H 1075, H 1075/G-L	WHE 1200/75	WHE 1200/075
H 1080/GR-L, H 1080/GR-M5	WHE 1200/80	WHE 1200/080
H 2021	WHE 1200/21	WHE 1200/021
H 2050	WHE 1200/50	WHE 1200/050
H 3014	WHE 1200/3014	WHE 1200/03014
H 3023	WHE 1200/3023	WHE 1200/03023
H 3024	WHE 1200/3024	WHE 1200/03024
H 3026/W	WHE 1200/21	WHE 1200/21
H 3028/VR.01	WHE 1200/3028-1	WHE 1200/03028-1
H 5104..	WHE 1200/5104	WHE 1200/05104
SK790	WHE 1200/790	WHE 1200/790

RECEPTACLE	SLEEVE EXTRACTION TOOL	
	COMPLETE	INSERTION
H 1008	WHA 1200/08	WHA 1200/008
H 1012	WHA 1200/12	WHA 1200/012
H 1025	WHA 1200/25	WHA 1200/025

RECEPTACLE	SLEEVE INSERTION TOOL COMPLETE	MARKING ON TOOL SHANK
H 1015/G	WHE 137	1 Ring
H 1021	WHE 165	2 Rings
H 1021/G	WHE 165	2 Rings
H 1042	WHE 300	4 Rings
H 1050	WHE 265	3 Rings
H 1060/G	WHE 265	3 Rings
H 2021	WHE 165	2 Rings
H 2050	WHE 265	3 Rings
H 3010, H 3010-22, H 3010/S-23, H 3010/S-28	WHE 265	3 Rings
H 3010/GS, H 3010/GW, H 3010/GW5, H 3010/GWR5	WHE 265	3 Rings
H 3011	WHE 265	3 Rings
H 3020, H 3020/S-26	WHE 165	2 Rings
H 3020/GS-26, H 3020/GRS-26, H 3020/GW5, H 3020/GWR5	WHE 165	2 Rings
H 3023/G, H 3023/5G, H 3023/GWR5	WHE 165	2 Rings

Receptacle Insertion Tools

Metal Handle Design



Receptacle Extraction Tools

Metal Handle Design

Receptacle Insertion Tools

Plastic Handle Design



Screwing Tools / Screw-In Torques Test Probes with Thread

Screwing Tools / Screw-In Torques Test Probes with Thread

IMPORTANT: If excessive torque is applied, this may destroy the threaded test probe (broken thread, buckling of barrel and/or receptacle, damage to the barrel square-end or screw slot), or it may destroy the screwing tool (cracking/splitting of the square end, damage to the square-end surfaces etc. → loss of grip)

SERIES	SMALLEST CENTER	MAX. HEAD DIAMETER	TOOL TYPE	SCREWING TOOLS (% ¹ / ₄ " INCH CONNECTION)	RECOMMENDED SCREWING-IN TORQUE	MAXIMUM SCREWING-IN TORQUE
1007/G	1.27	1.0	A	WFSB 1007/G-1.27-1.0	0.5 ... 1.0 Ncm	max. 1.0 Ncm
1010/G	1.50	1.0	A	WFSB 1010/G-1.5-1.0	1.0 Ncm	max. 1.5 Ncm
	2.30	1.5	B	WFSB 1010/G-2.3-1.5-Z	1.0 Ncm	max. 1.5 Ncm
1012/G	1.50	1.0	A	WFSB 1012/G-1.5-1.0	0.5 ... 1.0 Ncm	max. 1.0 Ncm
	1.90	1.5	B	WFSB 1012/G-1.9-1.5-Z	0.5 ... 1.0 Ncm	max. 1.0 Ncm
1015/G	2.54	1.5	A	WFSB 1015/G-2.54-1.5	2.0 Ncm	max. 3.0 Ncm
	2.54	1.8	A	WFSB 1015/G-2.54-1.8	2.0 Ncm	max. 3.0 Ncm
1021/G, 1021/GV	2.54	1.8	A	WFSB 1021/G-2.54-1.8	3.0 Ncm	max. 5.0 Ncm
	2.54	2.0	A	WFSB 1021/G-2.54-2.0	3.0 Ncm	max. 5.0 Ncm
	3.00	2.5	B	WFSB 1021/G-C2S-3.0-2.5-Z	3.0 Ncm	max. 5.0 Ncm
	3.50	3.0	B	WFSB 1021/G-3.5-3.0-Z	2.0 Ncm	max. 3.0 Ncm
1021/G-D19xx, F19xx	2.54	1.5	C	WFSB 1021/G-2.54-1.5-SW	2.0 Ncm	max. 3.0 Ncm
	3.00	1.5	C	WFSB 1021/G-3.0-1.5-SW	3.0 Ncm	max. 5.0 Ncm
1021/GT-D17xx, F17xx	Plate-∅ ≥ 2.1	1.5	F	WFSB 1021/GT-1	3.0 Ncm	max. 5.0 Ncm
	Plate-∅ ≥ 2.8	1.6 - 2.2	F	WFSB 1021/GT-2	3.0 Ncm	max. 5.0 Ncm
1024/G, 1028/G	2.54	1.8	A	WFSB 1021/G-2.54-1.8	3.0 Ncm	max. 5.0 Ncm
	2.54	2.0	A	WFSB 1021/G-2.54-2.0	3.0 Ncm	max. 5.0 Ncm
	3.00	2.5	B	WFSB 1021/G-C2S-3.0-2.5-Z	3.0 Ncm	max. 5.0 Ncm
	3.50	3.0	B	WFSB 1021/G-3.5-3.0-Z	2.0 Ncm	max. 3.0 Ncm
1042/G	all	all	D	WFSB 3012/G-S1.8	4.0 Ncm	max. 15.0 Ncm
1053/G	5.00	4.0	B	WFSB 1053/G-5.0-4.0-Z	4.0 Ncm	max. 7.0 Ncm
	6.00	5.0	B	WFSB 1053/G-6.0-5.0-Z	4.0 Ncm	max. 7.0 Ncm
1060/G	4.00	3.0	A	WFSB 1060/G-4.0-3.0	4.0 Ncm	max. 15.0 Ncm
	5.00	4.0	B	WFSB 1060/G-5.0-4.0-Z	4.0 Ncm	max. 15.0 Ncm
	6.00	5.0	B	WFSB 1060/G-6.0-5.0-Z	4.0 Ncm	max. 15.0 Ncm
1060/G-D19xx, F19xx	4.00	2.3	C	WFSB 1060/G-4.0-2.3-SW	3.0 Ncm	max. 5.0 Ncm
1060/GT-F16xx	Plate-∅ ≥ 3.5	from 3.3	F	WFSB 1021/GT-1	3.0 Ncm	max. 5.0 Ncm
1060/GT-D17xx, F17xx	Plate-∅ ≥ 2.1	1.5	F	WFSB 1021/GT-1	3.0 Ncm	max. 5.0 Ncm
	Plate-∅ ≥ 2.8	2.2	F	WFSB 1021/GT-1	3.0 Ncm	max. 5.0 Ncm
1060/GT-D17xx, F17xx	Plate-∅ ≥ 4.0	3.3	F	WFSB 1060/GT	3.0 Ncm	max. 5.0 Ncm
	1061/G	4.00	3.0	A	WFSB 1060/G-4.0-3.0	4.0 Ncm
1075/G	5.00	4.0	A	WFSB 1070/G-5.0-4.0	5.0 Ncm	max. 15.0 Ncm
1078/G	7.00	5.0	A	WFSB 3015/G-7.0	5.0 Ncm	max. 15.0 Ncm
1080/G	7.60	6.0		Standard Socket - Wrench 6.0 mm		
3010/2G	4.00	3.0	A	WFSB 1060/G-4.0-3.0	4.0 Ncm	max. 15.0 Ncm
	5.00	4.0	B	WFSB 1060/G-5.0-4.0-Z	4.0 Ncm	max. 15.0 Ncm
	6.00	5.0	B	WFSB 1060/G-6.0-5.0-Z	4.0 Ncm	max. 15.0 Ncm
3010/2G5	4.00	3.0	A	WFSB 1060/G-4.0-3.0	4.0 Ncm	max. 15.0 Ncm
	5.00	4.0	B	WFSB 1060/G-5.0-4.0-Z	4.0 Ncm	max. 15.0 Ncm
	6.00	5.0	B	WFSB 1060/G-6.0-5.0-Z	4.0 Ncm	max. 15.0 Ncm
3010/2GW	4.00	3.0	A	WFSB 1060/G-4.0-3.0	4.0 Ncm	max. 15.0 Ncm
	5.00	4.0	B	WFSB 1060/G-5.0-4.0-Z	4.0 Ncm	max. 15.0 Ncm
	6.00	5.0	B	WFSB 1060/G-6.0-5.0-Z	4.0 Ncm	max. 15.0 Ncm
3010/2GW5	4.00	3.0	A	WFSB 1060/G-4.0-3.0	4.0 Ncm	max. 15.0 Ncm
	5.00	4.0	B	WFSB 1060/G-5.0-4.0-Z	4.0 Ncm	max. 15.0 Ncm
	6.00	5.0	B	WFSB 1060/G-6.0-5.0-Z	4.0 Ncm	max. 15.0 Ncm
3010/10G	4.00	3.0	A	WFSB 1060/G-4.0-3.0	4.0 Ncm	max. 15.0 Ncm
	5.00	4.0	B	WFSB 1060/G-5.0-4.0-Z	4.0 Ncm	max. 15.0 Ncm
	6.00	5.0	B	WFSB 1060/G-6.0-5.0-Z	4.0 Ncm	max. 15.0 Ncm

SERIES	SMALLEST CENTER	MAX. HEAD DIAMETER	TOOL TYPE	SCREWING TOOLS (% ¹ / ₄ " INCH CONNECTION)	RECOMMENDED SCREWING-IN TORQUE	MAXIMUM SCREWING-IN TORQUE
3011/2GS, 3011/2FGS	4.00	3.0	A	WFSB 1060/G-4.0-3.0	4.0 Ncm	max. 15.0 Ncm
	5.00	4.0	B	WFSB 1060/G-5.0-4.0-Z	4.0 Ncm	max. 15.0 Ncm
	6.00	5.0	B	WFSB 1060/G-6.0-5.0-Z	4.0 Ncm	max. 15.0 Ncm
3012/2GS	all	all	D	WFSB 3012/G-S1.8	4.0 Ncm	max. 7.0 Ncm
3012/2GSL (Plungers with Pins)	all	all	D	WFSB 3012/G-S1.8	4.0 Ncm	max. 7.0 Ncm
3012/2GSL (Plungers without Pins)	4.00	2.6	A	WFSB 3012-4.0-2.6	4.0 Ncm	max. 7.0 Ncm
3014/2G	4.00	3.0	A	WFSB 1060/G-4.0-3.0	4.0 Ncm	max. 15.0 Ncm
	5.00	4.0	B	WFSB 1060/G-5.0-4.0-Z	4.0 Ncm	max. 15.0 Ncm
	6.00	5.0	B	WFSB 1060/G-6.0-5.0-Z	4.0 Ncm	max. 15.0 Ncm
3015/G	7.00	5.0	A	WFSB 3015/G-7.0	5.0 Ncm	max. 15.0 Ncm
	2.54	1.8	A	WFSB 1021/G-2.54-1.8	3.0 Ncm	max. 5.0 Ncm
3020/2G, 3020/2GW5	2.54	2.0	A	WFSB 1021/G-2.54-2.0	3.0 Ncm	max. 5.0 Ncm
	3.00	2.5	B	WFSB 1021/G-C2S-3.0-2.5-Z	3.0 Ncm	max. 5.0 Ncm
	3.50	3.0	B	WFSB 1021/G-3.5-3.0-Z	2.0 Ncm	max. 3.0 Ncm
3023/2GS	2.54	1.8	A	WFSB 1021/G-2.54-1.8	3.0 Ncm	max. 5.0 Ncm
	2.54	2.0	A	WFSB 1021/G-2.54-2.0	3.0 Ncm	max. 5.0 Ncm
	3.00	2.5	B	WFSB 1021/G-C2S-3.0-2.5-Z	3.0 Ncm	max. 5.0 Ncm
	3.50	3.0	B	WFSB 1021/G-3.5-3.0-Z	2.0 Ncm	max. 3.0 Ncm
	2.54	1.8	A	WFSB 1021/G-2.54-1.8	3.0 Ncm	max. 5.0 Ncm
3024/2G	2.54	1.8	A	WFSB 1021/G-2.54-1.8	3.0 Ncm	max. 5.0 Ncm
	2.54	2.0	A	WFSB 1021/G-2.54-2.0	3.0 Ncm	max. 5.0 Ncm
	3.00	2.5	B	WFSB 1021/G-C2S-3.0-2.5-Z	3.0 Ncm	max. 5.0 Ncm
3028.01	3.50	3.0	B	WFSB 1021/G-3.5-3.0-Z	2.0 Ncm	max. 3.0 Ncm
	2.54	1.8	A	WFSB 1021/G-2.54-1.8	3.0 Ncm	max. 5.0 Ncm
	2.54	2.0	A	WFSB 1021/G-2.54-2.0	3.0 Ncm	max. 5.0 Ncm
3030/GW3	3.00	2.5	B	WFSB 1021/G-C2S-3.0-2.5-Z	3.0 Ncm	max. 5.0 Ncm
	3.50	3.0	B	WFSB 1021/G-3.5-3.0-Z	2.0 Ncm	max. 3.0 Ncm
	2.54	1.5	A	WFSB 1015/G-2.54-1.5	2.0 Ncm	max. 3.0 Ncm
3035/GW	2.54	1.8	A	WFSB 1015/G-2.54-1.8	2.0 Ncm	max. 3.0 Ncm
	1.50	1.0	A	WFSB 1012/G-1.5-1.0	0.5 ... 1.0 Ncm	max. 1.0 Ncm
3212/2GS (Plungers with Pins)	1.90	1.5	B	WFSB 1012/G-1.9-1.5-Z	0.5 ... 1.0 Ncm	max. 1.0 Ncm
	all	all	D	WFSB 3012/G-S1.8	4.0 Ncm	max. 7.0 Ncm
3212/2GS (Plungers without Pins)	4.00	2.6	A	WFSB 3012-4.0-2.6	4.0 Ncm	max. 7.0 Ncm
4004/G	4.00	3.0	A	WFSB 1060/G-4.0-3.0	4.0 Ncm	max. 15.0 Ncm
	5.00	4.0	B	WFSB 1060/G-5.0-4.0-Z	4.0 Ncm	max. 15.0 Ncm
	6.00	5.0	B	WFSB 1060/G-6.0-5.0-Z	4.0 Ncm	max. 15.0 Ncm
5087	4.00	2.5	A	WFS 5087-4.0-2.5	5.0 Ncm	max. 15.0 Ncm
	5.00	4.0	B	WFSB 5087-5.0-4.0-Z	5.0 Ncm	max. 15.0 Ncm
5104	4.00	3.0	A	WFSB 1060/G-4.0-3.0	4.0 Ncm	max. 15.0 Ncm
	5.00	4.0	B	WFSB 1060/G-5.0-4.0-Z	4.0 Ncm	max. 15.0 Ncm
	6.00	5.0	B	WFSB 1060/G-6.0-5.0-Z	4.0 Ncm	max. 15.0 Ncm
5110/G	4.00	3.0	A	WFSB 1060/G-4.0-3.0	4.0 Ncm	max. 15.0 Ncm
	5.00	4.0	B	WFSB 1060/G-5.0-4.0-Z	4.0 Ncm	max. 15.0 Ncm
	6.00	5.0	B	WFSB 1060/G-6.0-5.0-Z	4.0 Ncm	max. 15.0 Ncm

A – closed square-head | **B** – claw (only for two-line assembly) | **D** – screwdriver for slotted screws | **E** – hexagon socket key | **F** – three point wrench
Other tools on request! When ordering tools, please specify the test probe to be assembled!

Screwing Tools / Screw-In Torques Test Probes with Thread

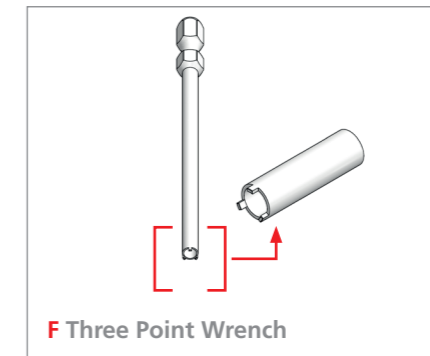
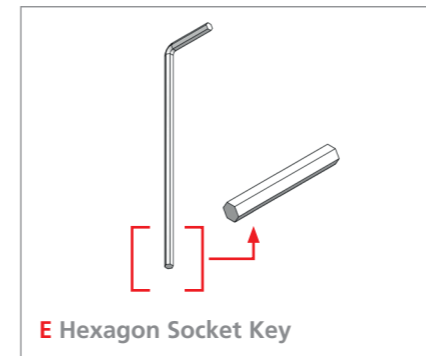
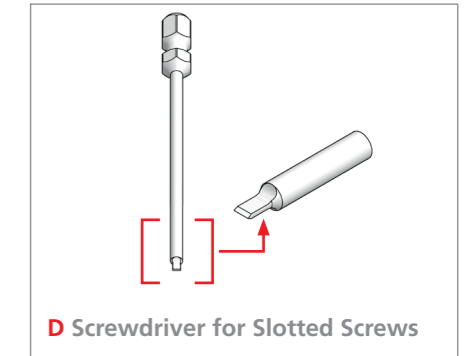
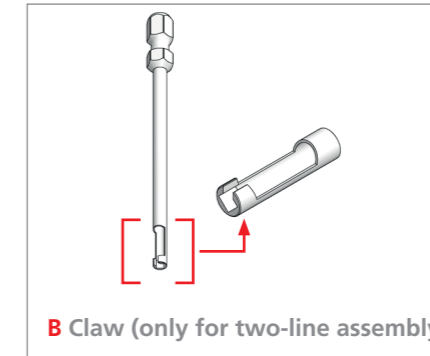
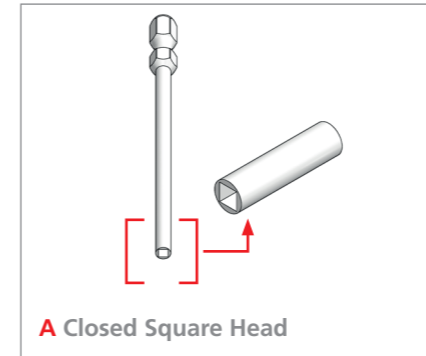
IMPORTANT: If excessive torque is applied, this may destroy the threaded test probe (broken thread, buckling of barrel and/or receptacle, damage to the barrel square-end or screw slot), or it may destroy the screwing tool (cracking/splitting of the square end, damage to the square-end surfaces etc. → loss of grip)

SERIES	SMALLEST CENTER	MAX. HEAD DIAMETER	TOOL TYPE	SCREWING TOOLS (¼" INCH CONNECTION)	RECOMMENDED SCREWING-IN TORQUE	MAXIMUM SCREWING-IN TORQUE
5203	2.54	2.0	A	WFSB 5203-2.54-2.0	3.0 Ncm	max. 5.0 Ncm
	3.50	2.7	B	WFSB 5203-3.5-2.7-Z	3.0 Ncm	max. 5.0 Ncm
5207/G	all	all	E	Hexagon Socket Key 2 mm	4.0 Ncm	max. 15.0 Ncm
5248/G	2.5	2.0	A	WFSB 5248/G-2,54-2,0	3.0 Ncm	max. 5.0 Ncm
5257/G	2.54	1.8	A	WFSB 1021/G-2.54-1.8	3.0 Ncm	max. 5.0 Ncm
	2.54	2.0	A	WFSB 1021/G-2.54-2.0	3.0 Ncm	max. 5.0 Ncm
	3.00	2.5	B	WFSB 1021/G-C2S-3.0-2.5-Z	3.0 Ncm	max. 5.0 Ncm
	3.50	3.0	B	WFSB 1021/G-3.5-3.0-Z	2.0 Ncm	max. 3.0 Ncm
5265	3.00	2.3	A	WFSB 5265-3.0-2.3	3.0 Ncm	max. 5.0 Ncm
	3.00	2.5	B	WFSB 5265-3.0-2.5-Z	3.0 Ncm	max. 5.0 Ncm
	3.50	3.0	B	WFSB 5265-3.5-3.0-Z	3.0 Ncm	max. 5.0 Ncm
5310/G	2.54	1.8	A	WFSB 1021/G-2.54-1.8	3.0 Ncm	max. 5.0 Ncm
	2.54	2.0	A	WFSB 1021/G-2.54-2.0	3.0 Ncm	max. 5.0 Ncm
7840/G	/	8.0	B	WFSB 7840/G-8.0	5.0 Ncm	max. 8.0 Ncm
7860/G	/	8.0	B	WFSB 7860/G-8.0	5.0 Ncm	max. 8.0 Ncm

Screwing Tools for Test Probes with Thread

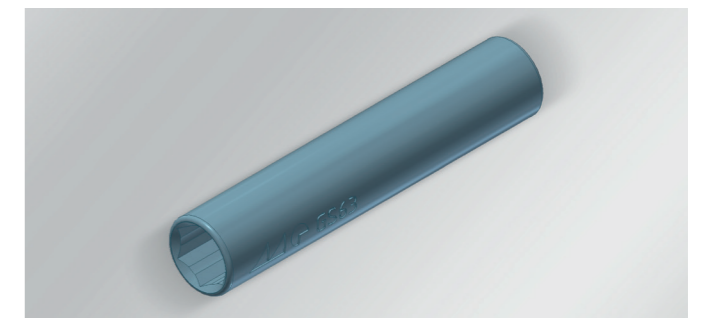
Screwing Tools for Test Probes with Thread

Tool Type with ¼" Inch Connection



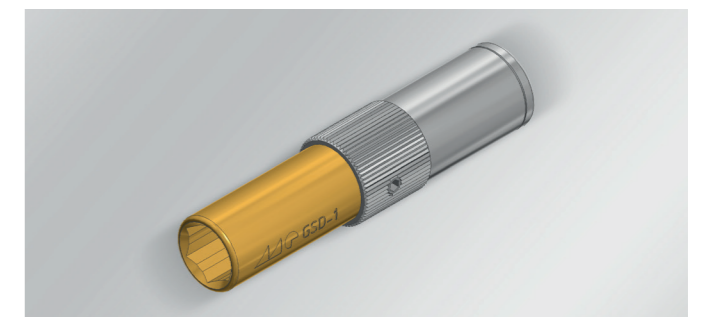
Screwing Tool without Torque Limit GS 63

Tool Reception ¼" Inch



Screwing Tool with Torque Limit (Ratchet) GSD-x

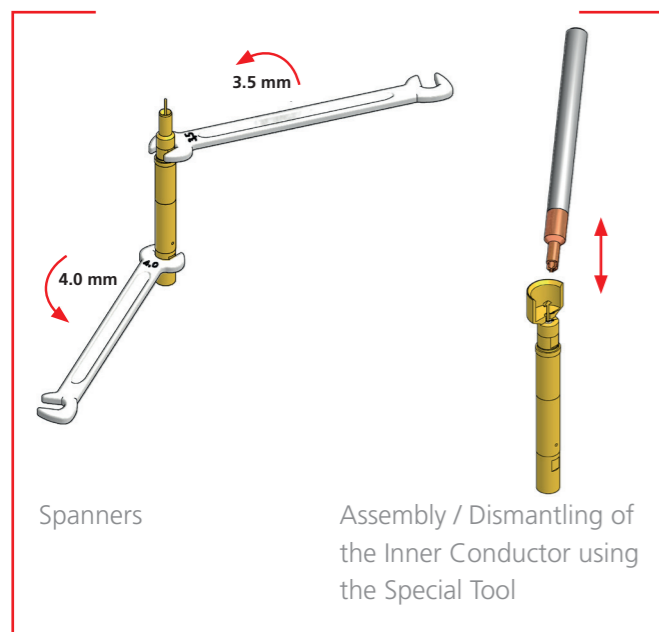
Tool Reception ¼" Inch



TYPE	COLOUR CODE	SECTOR
GSD-1	gold	1 Ncm
GSD-2	green	2 Ncm
GSD-3	blue	3 Ncm
GSD-4	red	4 Ncm

A – closed square-head | B – claw (only for two-line assembly) | D – screwdriver for slotted screws | E – hexagon socket key | F – three point wrench
Other tools on request! When ordering tools, please specify the test probe to be assembled!

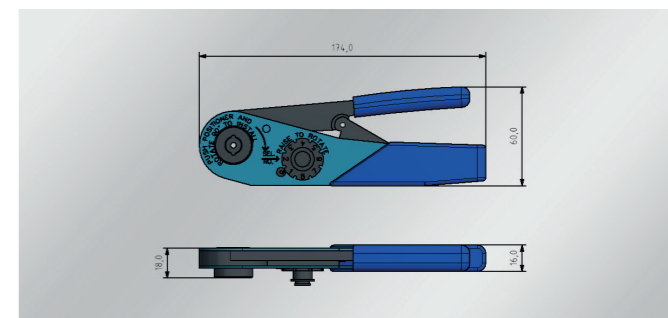
Assembly Tools for High Frequency Test Probe



SERIES	MAX. HEAD DIAMETER	TOOL TYPE
7840(G) / 7860(G)	0.5	WFK 7860-i-05
7840(G) / 7860(G)	1.8	WFK 7860-i-18
7840(G) / 7860(G)		SW 3.5
7840(G) / 7860(G)		SW 4.0
7890		SW 2.5
7890		SW 3.0

HIGHLIGHTS	
4 point crimping	
For receptacles	
Crimping capacities adjustable	
SPECIFICATIONS	
Wire Size	0.09 - 0.82 mm ²
AWG	32 - 20
Weight	332,75 g

Crimp Tool AFM8



TYPE	PRESET TORQUE
DMS 1	1 Ncm
DMS 2	2 Ncm
DMS 3	3 Ncm
DMS 4	4 Ncm

Torque Screwdriver



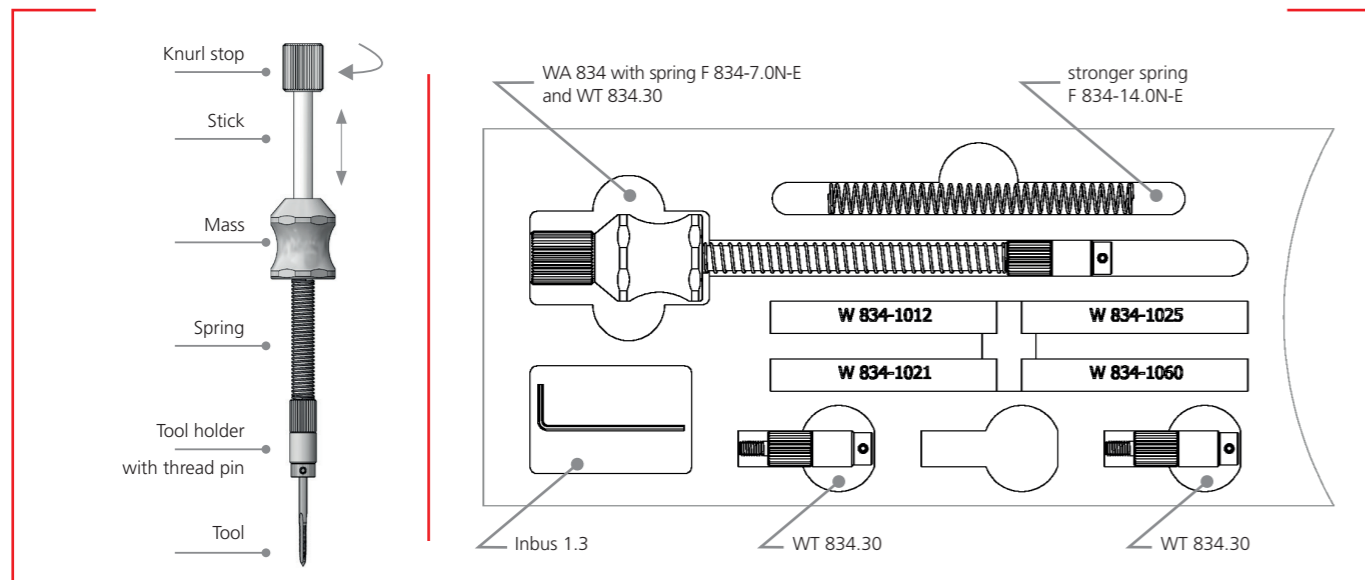
Tool Changing WA 834 for Mounting Receptacles



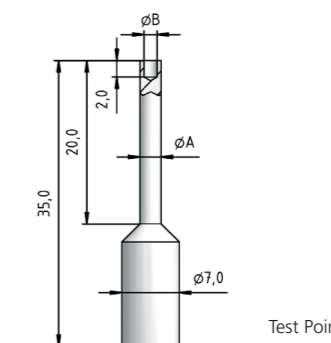
CONTENT
Basic tool WA 834 with standard spring F 834-7.0N-E
Standard spring can be replaced with the stronger spring F 834-14.0N-E

SPECIFICATIONS	
Measuring range	0 ... 50 N
Resolution	0,01 N
Pressure calibration	0,1 Mpa
Load cell	Integrated load cell with M6 connection
Measuring range	1 ... 100 % of the full scale
Measurement accuracy	± 0,5 %
Units	N, kg, lb
Display	LCD
Display Orientation	0° / 180°
Power supply	Internal battery, 12V / 1 A power adapter
Operating temperature	+10 ... +30 °C / 50 ... 86°F
Relative humidity	15 ... 80 % relative humidity
Weight	1 kg / 2.2 lbs
Interface	USB

Digital Force Gauge FKT50



DIMENSION		
Ø A (mm)	Ø B (mm)	CENTER (mm)
2.1	1.6	2.54
2.6	2.1	2.54
3.6	3.1	4.0
4.6	4.1	5.0
5.6	5.1	6.0



Representations | PTR HARTMANN Worldwide

Overseas Representations Testing Technology

Austria

Wöhrlleitner & Wöhrlleitner GmbH
Eumigweg 7
A – 2351 Wiener Neudorf
Phone 0043 2236-6281810
Fax 0043 2236-6281819
r.beran@woehrleitner.at
www.woehrleitner.at

Belgium

PM Komponenten NV
Karrewegstraat 124
B – 9800 DEINZE
Phone 0032 9220-7050
Fax 0032 9220-7250
info.pmb@pmk.be
www.pmk.be

China

Shenzhen Elcom Co., Ltd.
8/F, Guancheng Industry Building,
Gongming Town
CN – Guangming District, Shenzhen
Phone 0086 755 2768-5838
Fax 0086 755 2768-2188
eddy@elcom-shenzhen.com
www.elcom-shenzhen.com/en/

Czech Republic, Slovakia

Technik Partner s.r.o.
U Rybníka 149
CZ – 250 65 Boranovice
Phone 00420 28385-1781
Fax 00420 28385-2775
info@technikpartner.cz
www.technikpartner.cz

Denmark

Chemo Electric A/S
Hasselunden 14 - 16
DK – 2765 Smorum
Phone 0045 3677-3044
Fax 0045 3677-3088
info@chemolec.dk
www.chemolec.dk

Finland

Tampereen Sähköpalvelu Oy
Autokeskuksentie 16
FIN – 33960 TAMPERE
Phone 0035 832515-111
Fax 0035 832515-211
tsp@tsp.fi
www.tsp.fi

France

Phoenix Mecano S.A.R.L.
76, rue du Bois-Galon
F – 94120 Fontenay-Sous-Bois, Cedex
Phone 0033 15399-5059
Fax 0033 15399-5079
info.ptr@phoenix-mecano.com
www.phoenixmecano.fr

Great Britain

Peak Test Services Ltd.
152 Front Street, Chester-le-Street
GB – Co. Durham DH3 3AY
Phone 0044 191 387-1923
Fax 0044 191 387-1994
peak.test@thepeakgroup.com
www.thepeakgroup.com

Hungary

Phoenix Mecano Kecskemét Kft
Szent István krt. 24
H – 6000 Kecskemét
Phone 0036 76 515-500
Fax 0036 76 515-555
info@phoenix-mecano.hu
www.phoenix-mecano.hu

India

Madhu Subtronic Components Pvt.
Ltd.
1st Floor, Krishna Building, Shamrao
Vithal Marg, Grand Road (E)
Mumbai - 400 007, INDIA
Phone 0091 22 2386 4484
Fax 0091 22 2387 6729
cs@mscpl.com
www.mscpl.com

Italy

Fast Elettronica Italiana S.p.A.
Via Rovetta, 35
IT – 20127 Milano
Phone 0039 022-610141
Fax 0039 022-822287
sales@fastelettronica.com
www.fastelettronica.com

Mexico

Target Technology Inc.
Pensylvania 30,
Col. Nápoles C.P. 03810,
México D.F.
Phone 0052 55-55235654
Fax 0052 55-11078875
electronic@targettech.com.mx
www.targettech.com.mx

Netherlands

Elincom electronics BV
Klaverbaan 101
NL – 2908 KD Capelle aan den IJssel
Phone 0031 102640-270
Fax 0031 102640-275
info@elincom.nl
www.elincom.nl

Poland

Semicon Sp. z o.o.
ul. Zwolenska 43/43A
PL – 04- 761 Warszawa
Phone 0022 61573-71
Fax 0022 61573-75
info@semicon.com.pl
www.semicon.com.pl

Russia

Russian Representation
Moscow
Phone 007 9663177733
Mobil: 007 9067960606
Alexey.Burkhanov@ptr-hartmann.com

Singapore

Phoenix Mecano S.E. Asia
Pte. Ltd.
53 Ubi Ave 3
04-01, Colourscan Building
SG – 408863
Phone 0065 67491611
Fax 0065 67496766 / -49
pmsea@pmecano.com.sg
www.phoenixmecano.com.sg

Spain

Dotest S.L.
Gran Vía de Carles III, 33-35
Baixos
E – 08028 Barcelona
Phone 0034 934-905560
Fax 0034 934-118244
dotest@dotestsl.com
www.dotestsl.com

South Africa

WILTRON Agencies CC
Stand 3622/66 9 MT Noonmark
Crescent Retire@Midstream
ZA – 1692 Midrand Estate
Phone 0027 824400448
Fax 0027 866847506
wiltron@global.co.za
www.wiltron-agencies.co.za

South Korea

Test Meca Co., Ltd.
#535, Shinanmetrokan,
239 Pyeongchon-Daero, Dongan-Gu,
Anyang-Si, Gyeonggi-Do,
KOREA (14047)
Phone 0082 31388-2211
Fax 0082 31388-2212
pnb@testmeca.co.kr
www.testmeca.co.kr

Switzerland

Phoenix Mecano Komponenten AG
Hofwisenstr. 6,
CH – 8260 Stein am Rhein
Phone 0041 52742-7500
Fax 0041 52742-7590
info@phoenix-mecano.ch
www.phoenix-mecano.ch

Tunisia

EP-Technology Trading S.U.A.R.L.
29 Rue Ahmed TLILI
ZI Borj Cédria
TN – 2055 BIR EL BEY – BEN AROUS
Phone 00216 79412808
Fax 00216 79412908
sales@ep-technology.com
www.ep-technology.com

Turkey

ELOPAR A.S.
Istanbul caddesi,
Kavakli koy yolu uzeri . No : 13
TR – Istanbul – Beylikduzu
Phone 0090 212 8751940
Fax 0090 212 8750473
elopar@elopar.com.tr
www.elopar.com.tr

USA

RNS International, Inc.
5001 Sirius Lane
US – Charlotte, NC 28208
Phone 001 704 3290444
Fax 001 704329-0404
sales@rns-usa.com
www.rns-usa.com



PTR HARTMANN GmbH
Mario Graw
Tel. 0172 8139721
mario.graw@ptr-hartmann.com



Thomas Lüllau Engineering Office
Am Fischteich 7B
21423 Winsen (Luhe)
Phone 04171 7884-40
Fax 04171 7884-41
tl@t-luellau.de
www.t-luellau.de



PTR HARTMANN GmbH
Lars Schlücker
Phone 0151 46190518
lars.schluecker@ptr-hartmann.com



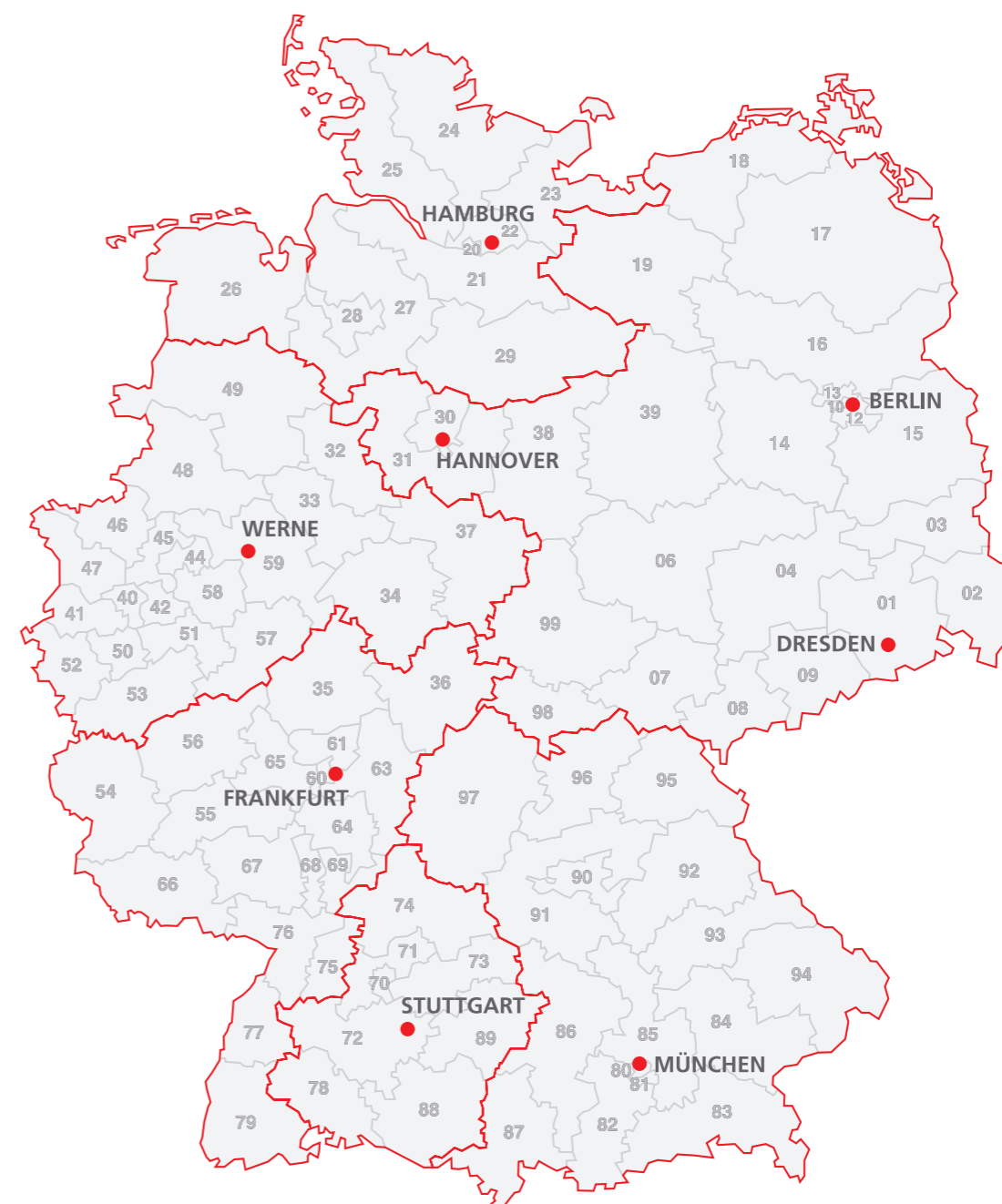
PTR HARTMANN GmbH
Jürgen Bierent
Phone 0171 4161469
juergen.bierent@ptr-hartmann.com



PTR HARTMANN GmbH
Reinhold Krebs
Phone 0151 15039955
reinhold.krebs@ptr-hartmann.com



PTR HARTMANN GmbH
Vanessa Bernecker
Phone 02389 7988142
vanessa.bernecker@ptr-hartmann.com



Series Index

SERIES DESIGNATION	PAGE	SERIES DESIGNATION	PAGE
1001	30	1025/D	88
1002	31	1025/E	69
1003	32	1025/E – HPL	82
1004/E	64	1028/G	105
1005	33	1030	52
1006	34	1034/E	70
1007	38	1036/E	71
1007.50	39	1040	54
1007.60	40	1041 • 1041W	58
1007.70	41	1042	59
1007/G	96	1042/G	112
1008/D	86	1050	55
1008/E	65	1051 • 1061	57
1008/E – HPL	80	1053	119
1008/E.50	66	1053/G	121
1010	42	1054	53
1010.50	43	1055	60
1010/G	97	1060	56
1011	44	1060 • 1060/G – High-Current	167
1012/D	87	1060/G	107
1012/E	67	1060/G for Position Test	108
1012/E – HPL	81	1060/GT for Position Test	109
1012/G	98	1061/G	110
1012/G for Position Test	99	1064	182
1013/Z	68	1075 • 1075/G – High-Current	168
1015	45	1078/G – High-Current	169
1015.50	46	1080/G – High-Current	170
1015/G	100	2021 • 1021	72
1015/G for Position Test	101	2024 • 1024	73
1016	47	2028 • 1028	74
1016 – Fixture Customizing	224	2029	75
1018	48	2053	118
1018.06	49	3003	128
1021 • 1021/G – High-Current	164	3010/2 • 3010/10	129
1021/G	102	3010/2F	130
1021/G for Position Test	103	3010/2G • 3010/10G	142
1021/GT for Position Test	104	3010/2GW(5)	143
1021/GV	120	3010/2V	132
1025.21	225	3010/2W	131

SERIES DESIGNATION	PAGE	SERIES DESIGNATION	PAGE
3011/2FGS	145	5207/G	205
3011/2GS	144	5248/G	92
3012/2GS	146	5257/G	93
3012/2GS • FS1/FLS1	147	5265	158
3012/2GSL	148	5303	183
3014/2G	149	5303/LR01	184
3015.06	133	5303/T01	185
3015/G	152	5305	186
3020/2	125	5310/G	106
3020/2G	137	5310/G – High-Current	165
3020/2GW5	138	FKB5322 – SMD	196
3023/2GS	139	PKB5322 – SMD	197
3024/2G	140	FKB5322 – L01	198
3026/2W	126	FKB5322 – T01	199
3028.01	156	FKB5457 – SMD	201
3030	127	FKB5458 – SMD	200
3030/GW3	141	7840 • 7840/G PCB Contact	210
3035	124	7860 • 7860/G – Z1	211
3035/GW	136	MM8130 • MM8430 • MS156	
3212/2GS	150	7860 • 7860/G – Z2	212
3214/2GW	151	MM8130 • MM8430 • MS156	
4004	176	7860 • 7860/G – Z3 U.FL-m	213
4004/G	178	7860 • 7860/G – Z4 R-SMA-m	214
4005	175	7860 • 7860/G – Z5 MCX-f	215
4006	174	7860 • 7860/G – Z6 SMA-f	216
4034	177	7860 • 7860/G – Z7 SMB-m	217
5082	191	7860 • 7860/G – Z8 SMB-f	218
5082.01	192	7860 • 7860/G – Z9 SMC-m	219
5082/L	193	7860 • 7860/G – Z20 FAKRA Socket	221
5087	159	7860 • 7860/G – Z25 FAKRA Plug	220
5099	187	7890 – Z1 MINI FAKRA Socket	209
5099.04	188	7890 – Z2 MINI FAKRA Plug	208
5099.43	189	IF Contacts	227
5104	160	GK Contacts	227
5110/S	190	Receptacles 1012	76
5110/G	111	Receptacles 1021/G	113
5110/S • 5110/G – High-Current	166	Receptacles 1025	77
5203	157	Receptacles 1060/G	114
5207	204	Pneumatic Accessories	179
		SK 790 – PCB Marker Probe	226

Series Index

Imprint

PTR HARTMANN GmbH

Gewerbehof 38
59368 Werne, Germany
Phone +49 2389 7988-0
Fax +49 2389 7988-88
info@ptr-hartmann.com
www.ptr-hartmann.com

Design:

PTR HARTMANN GmbH
Databased-Publishing:
cybob communication GmbH
Creative Concept:
Christiane Luhmann
www.luhmannandfriends.com

Photos:

Tim Luhmann Fotografie & Film
iStockphoto.com

Print:

Bösmann Medien und Druck GmbH & Co.KG

Copyright:

PTR HARTMANN GmbH
subject to change, 09/2019

This catalogue replaces all earlier editions.

FSC® (Forest Stewardship Council®) | Climate neutral



The promotion of an environmentally friendly, socially beneficial and economically viable management of forests — this is the Forest Stewardship Council®'s (FSC®) mission. The FSC's logo must only be used in conjunction with wood products which come from sustainable forest use or which conserve the forest's resources.

In this way, the FSC and its system of certification actively support sustainability when it comes to dealing responsibly with our natural resources.

PTR HARTMANN GmbH supports this mission, and has printed this catalogue in accordance with the guidelines of the FSC directive.

Climate neutral



Carbon neutral printing means compensating for unavoidable carbon dioxide emissions by conserving them in other places when creating print media. The basis for this is an emissions balance which can be tracked in detail for the relevant print medium.

PTR HARTMANN's 2019 "Testing Technology" catalogue has been produced in accordance with this guideline. The ID number can be used to track the emissions balance.