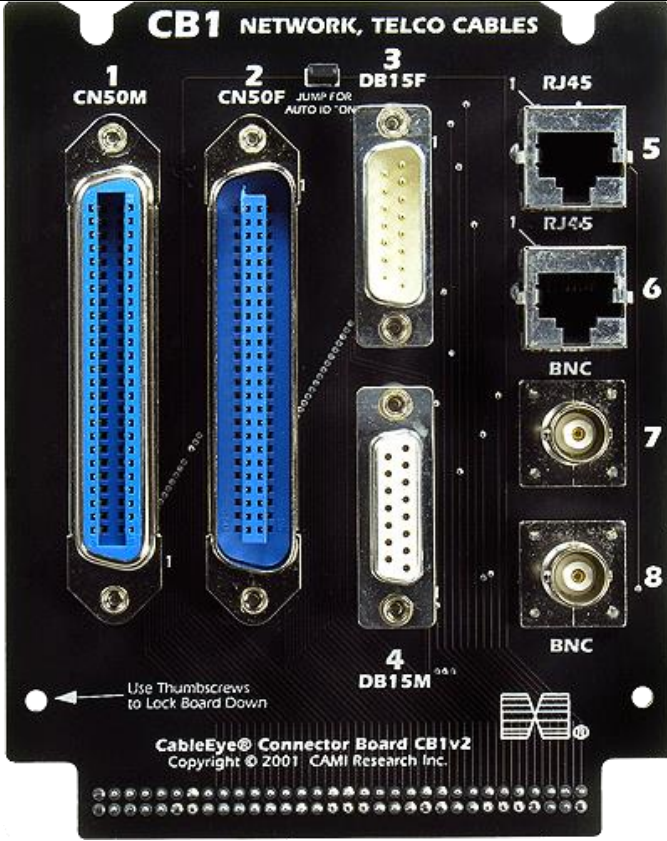
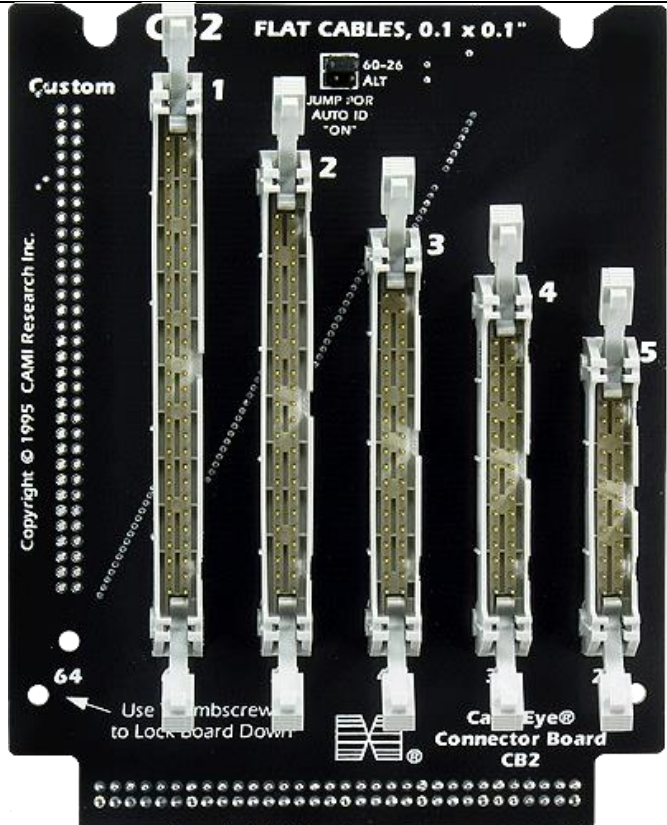
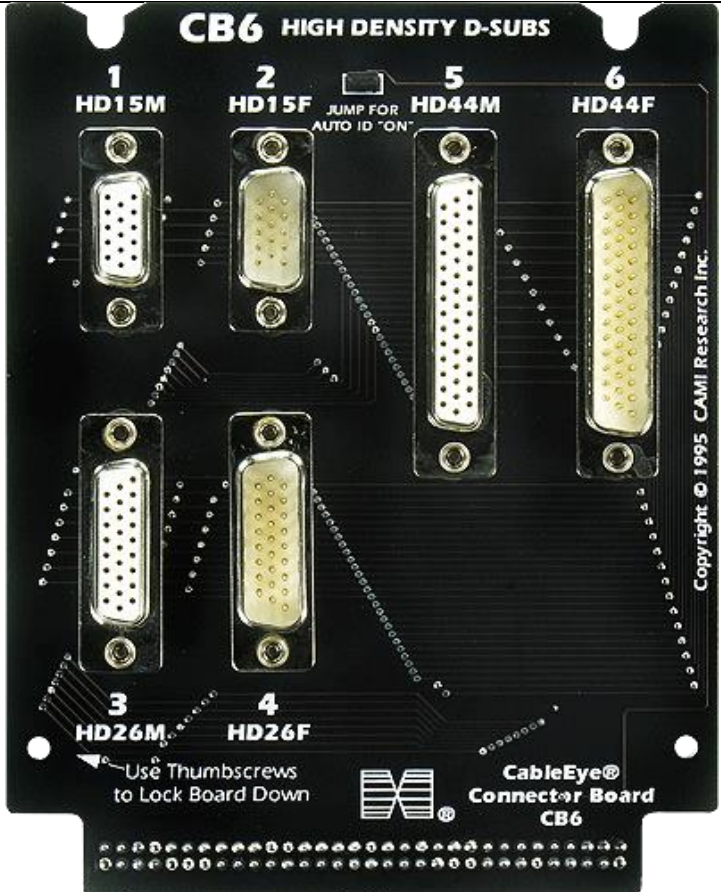


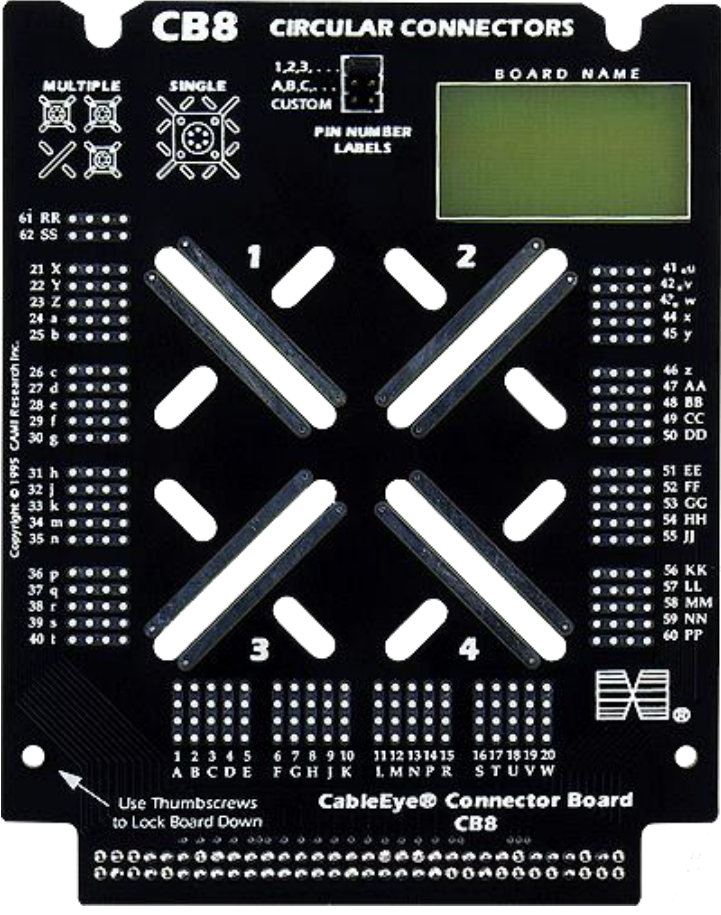
## PRZYKŁADOWE PŁYTY DO TESTERÓW CABLEEYE

Nazwa płyty	Złącza	Zdjęcie
CB1	CN50M, CN50F, DB15F, DB15M, RJ45, BNC,	 <p>The image shows the CableEye Connector Board CB1v2. It is a black PCB with various connectors. On the left, there are two large blue connectors labeled 1 (CN50M) and 2 (CN50F). In the center, there are two smaller connectors labeled 3 (DB15F) and 4 (DB15M). On the right side, there are four connectors labeled 5 (RJ45), 6 (RJ45), 7 (BNC), and 8 (BNC). A small switch labeled 'JUMP FOR AUTO ID "ON"' is located between connectors 2 and 3. At the bottom, there is a row of 64 pins. Text on the board includes 'CableEye® Connector Board CB1v2 Copyright © 2001 CAMI Research Inc.' and 'Use Thumbscrews to Lock Board Down'.</p>
CB2	IDC FLAT CABLES: 60, 50, 40, 34 i 26 pinów	 <p>The image shows the CableEye Connector Board CB2. It is a black PCB with five IDC flat cable connectors labeled 1 through 5. A switch labeled '60-26 ALT JUMP FOR AUTO ID "ON"' is located at the top. On the left side, there is a row of 64 pins. Text on the board includes 'Copyright © 1995 CAMI Research Inc.' and 'CableEye® Connector Board CB2'. An arrow points to the 64 pins with the text 'Use Thumbscrew to Lock Board Down'.</p>

CB6  
 HD15M, HD15F,  
 HD26M, HD26F,  
 HD44M, HD44F

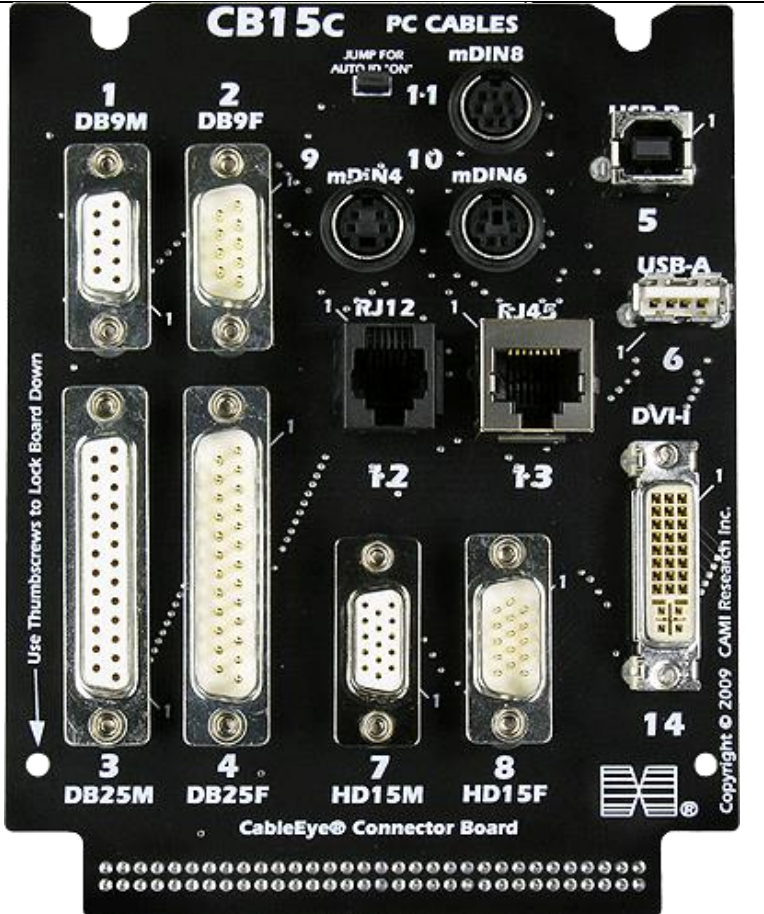


CB8  
 Płyta uniwersalna do złączy okrągłych



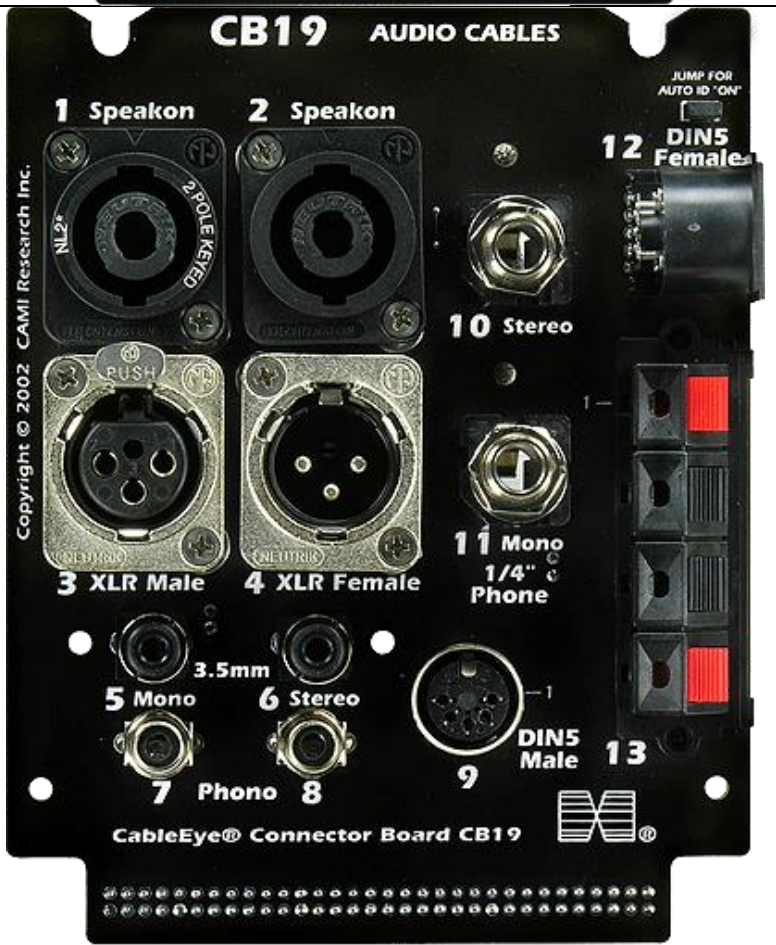
CB15C

DB9M, DB9F,  
DB25M, DB25F,  
USB-B, USB-A,  
HD15M, HD15F,  
mDIN4, mDIN6,  
mDIN8, RJ12,  
RJ45, DVI-F

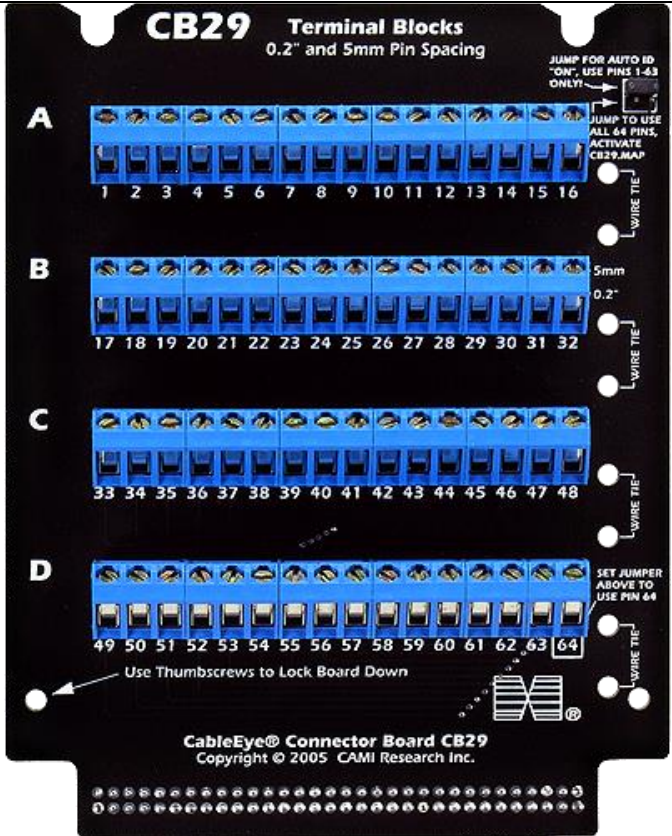


CB19

NEUTRIK  
SPEAKON 2 I 4 –  
POLOWY, XLR 3-  
PINOWY MĘSKI I  
ŻEŃSKI, 3,5 MM  
JACK MONO I  
STEREO, DIN5  
MĘSKI I ŻEŃSKI,  
1/4" JACK STERO  
I MONO, 4  
TERMINALE  
ZACISKOWE



CB29  
 TERMINAL BLOKI



CB30  
 Płyta uniwersalna gęsty raster wyprowadzeń

