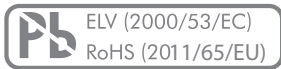


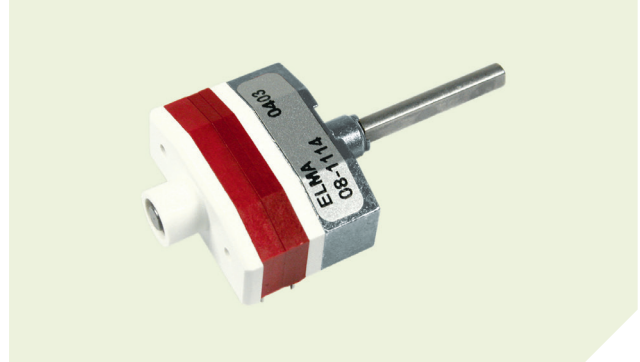
**MAIN FEATURES**

HORIZONTAL, MULTI WAFER, PCB MOUNTING, UP TO 12 POSITIONS

- For PCB mounting
- 25'000 switching cycles with up to 9 Ncm switching torque
- Gold plated contacts: 3 micron
- Robust metal housing with metal shaft
- Operating temperature range: -40° to +85°
- Various options and customizations

**PRODUCT VARIETY**

- From 1 x 12 to 4 x 3 poles x positions per wafer
- Up to 8 wafers
- Shorting or non-shorting
- Switching torque 3, 6 or 9 Ncm
- Configurable End-Stops

**TYPE 08****POSSIBLE CUSTOMIZATIONS**

- Shaft dimension and shape
- Switching torque
- Hollow shaft, inner shaft (see page 106)
- Others

**TYPICAL APPLICATIONS**

- Industrial controls
- Avionics, instrumentation, test systems
- Medical and audio equipment

**1 PREFERENCE TYPES SELECTION CHART**

<sup>1</sup> For other types/options, see type key.

CONTACT ARRANGEMENT		NUMBER OF WAFERS	FUNCTION (POLES X POSITIONS)	PART NUMBER	
COMMON WAFER PART CONTACT	SWITCHING WAFER PART CONTACT			SHORTING	NON-SHORTING
		1	1 x 12, endless rotating	08-1103	08-1104
		2	2 x 12, endless rotating	08-2103	08-2104
		3	3 x 12, endless rotating	08-3103	08-3104
		4	4 x 12, endless rotating	08-4103	08-4104
		1	1 x 12	08-1113	08-1114
		2	2 x 12	08-2113	08-2114
		3	3 x 12	08-3113	08-3114
		4	4 x 12	08-4113	08-4114
		1	2 x 6	08-1263	08-1264
		2	4 x 6	08-2263	08-2264
		3	6 x 6	08-3263	08-3264
		4	8 x 6	08-4263	08-4264
		1	3 x 4	08-1343	08-1344
		2	6 x 4	08-2343	08-2344
		3	9 x 4	08-3343	08-3344
		4	12 x 4	08-4343	08-4344
		1	4 x 3	08-1433	08-1434
		2	8 x 3	08-2433	08-2434
		3	12 x 3	08-3433	08-3434
		4	16 x 3	08-4433	08-4434

\* Common interconnection to be made on PCB.

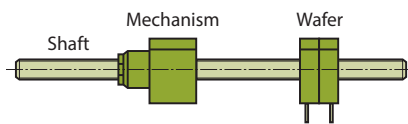
**STOP AND FIXING SCREWS**

Configurable stop screws can be set at any position between 2 and the maximum. Stop screws have to be ordered separately.

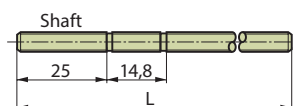
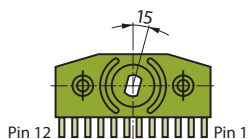
	PACKAGING SIZE	PART NUMBER
Stop screw M1.2	10 pcs.	4224-11
Stop screw M1.2	100 pcs.	4224-10
Fixing screw M2 x 6	10 pcs.	4224-01

**AVAILABLE IN KIT FORM**

Mechanism, wafer and shaft are supplied separately. This offers more possibilities to place the switch onto the PC-board.



View of wafer from front side



**WAFER**

FUNCTIONS (POLES X POSITIONS)	PART NUMBER SHORTING	PART NUMBER NON-SHORTING
1 x 12	4217-10	4218-10
2 x 6	4217-11	4218-11
3 x 4	4217-13	4218-13
4 x 3	4217-12	4218-12

**SWITCH MECHANISM**

NUMBER OF POLES	POSITIONS	TORQUE	PART NUMBER
≤ 6	12	6 Ncm	4214-10
> 6	12	9 Ncm	4214-12

**SHAFT INCLUDING ASSEMBLY MATERIAL**

LENGTH L	NO. OF HOUSINGS	PART NUMBER
75 mm	3	4211-05
100 mm	5	4211-10
125 mm	7	4211-15
150 mm	9	4211-20

## SPECIFICATIONS

### MECHANICAL DATA

Resolution:	12 positions max. (30° indexing)
Switching torque (new condition):	3, 6 or 9 Ncm (+/- 25%), additional wafers may increase switching torque
Rotational life:	25'000 switching cycles min.
Fastening torque of nut:	200 Ncm max.

### ELECTRICAL DATA

Function:	From 1 x 12 to 4 x 3 poles/positions per wafer
Switching mode:	Shorting or non-shorting
Load current:	1.5 A max. (resistive load)
Switching voltage:	42 VDC max.
Contact resistance (new condition):	20 mΩ max.
Insulation resistance (new condition):	10 <sup>13</sup> Ω min. (contact to contact / housing)
Switching capacity:	1 pF max. (contact to contact)
Dielectric withstanding voltage:	500 VDC during 60 seconds

### MATERIAL DATA

Shaft:	Stainless steel
Bushing/housing:	Zinc diecast, zinc plated and passivated
Contact plating:	Gold; 3 μm
Insulation material:	Wafer: PA6/6T, rotor: Polyacetal (POM)
Soldering leads:	Alloy copper, tin plated

### ENVIRONMENTAL DATA

Operating/storage temperature range:	-40° to +85°C
IP sealing:	IP60 shaft/front panel sealing
Vibration:	10 G <sub>rms</sub> max. @ 10 to 2000 Hz
Flammability:	UL94-HB

### PACKAGING QUANTITY

Tray:	10 pcs.
-------	---------

### SOLDERING CONDITIONS

Hand soldering:	340°C max. during 2 sec max.
Wave soldering:	280°C max. peak temperature during 5 sec max.

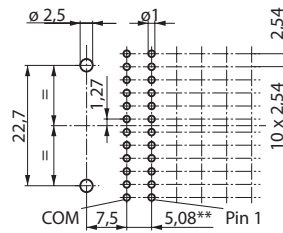
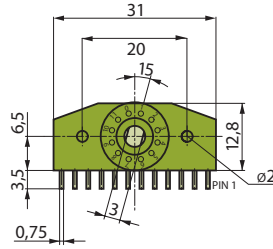
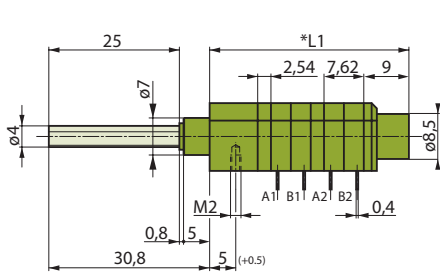
## SWITCHING MODES

For information about switching mode please see **technical explanations** at the end of the catalog

**DRAWINGS**

Tolerances unless otherwise specified DIN ISO 2768-1 (m)

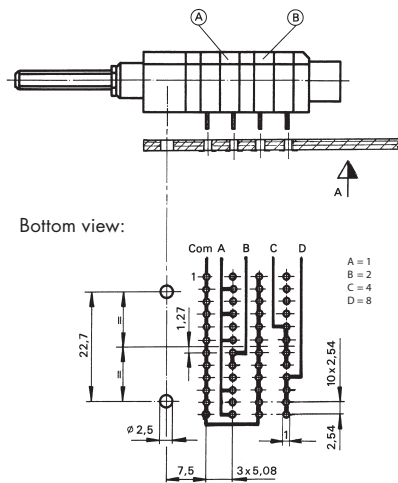
SWITCH WITH 2 WAFERS



Ax = Common contact wafer of x  
Bx = Switching contact wafer of x

- \* L - 1 wafer 28.25 mm ± 0.3 mm
- 2 wafers 38.32 mm ± 0.3 mm
- 3 wafers 48.40 mm ± 0.3 mm
- 4 wafers 58.45 mm ± 0.3 mm
- per additional wafer + 10.08 mm
- \*\* All further steps are in 5.08 mm pitch

**SWITCH WITH BCD CODING**



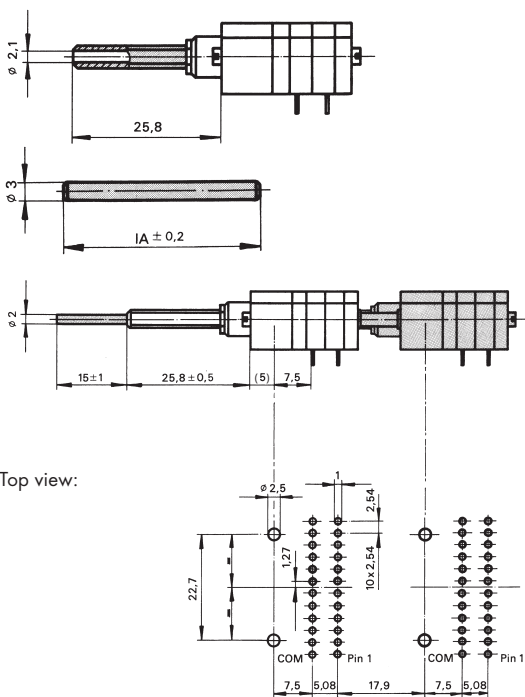
**BCD CODING**

For 12 positions, the coding will be made according to the layout on the left (on the printed circuit). If the switch is composed of component parts, the housings A (3 x 4) and B (1 x 12) have to be ordered. Limiting to 10 positions (BCD) is done with a stop screw M1.2 x 2.5.

**BCD Coding**

	8	4	2	1	
1					On
2					Off
3					On
4					Off
5					On
6					Off
7					On
8					Off
9					On
10					Off
11					On
12					Off

**HOLLOW SHAFT SYSTEM (CUSTOMIZED SOLUTION)**



**HOLLOW SHAFT**

Available for switches up to 4 wafers; inner shaft (Ø 2 mm) to be ordered separately.

**INNER SHAFT**

Must be ordered separately for switches with hollow shaft.

**SWITCH WITH CONCENTRIC SHAFTS**

Consisting of a hollow outer and inner shaft, the inner shaft driving a maximum of 3 wafers with 4 wipers each. Please indicate type of each switch.

**TYPE KEY**



**PART NUMBER**  
(see page 108)

**NUMBER OF WAFERS**  
(max. 8)  
> 8 on request

**NUMBER OF POLES**  
Number of poles per wafer

**FACTORY SET CHARACTER**  
Defined by Elma  
(see page 108, is composed of switching mode, poles and positions)

**SWITCHING MODE**  
**3** Shorting  
**4** Non-shorting

**TORQUE**  
- 6 Ncm  
**M** 3 Ncm  
**N** 9 Ncm

**FACTORY SET END-STOP**

- 00** 12 pos. (standard)
- 11** 11 pos.
- 10** 10 pos.
- 09** 09 pos.
- 08** 08 pos.
- 07** 07 pos.
- 06** 06 pos.
- 05** 05 pos.
- 04** 04 pos.
- 03** 03 pos.
- 02** 02 pos.

**SHAFT LENGTH (AL)**

- 000** 30.8 mm
- <sup>1</sup>xxx** Custom  
(e.g. 18.5 mm = 185)

<sup>1</sup> Customized shaft length  
Shaft length (AL) description measured from mounting face (see picture below).

Max. shaft length (AL): 30.8mm